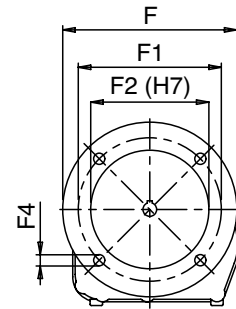
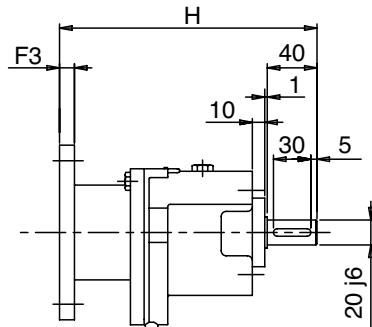
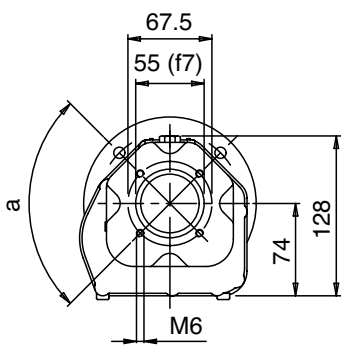
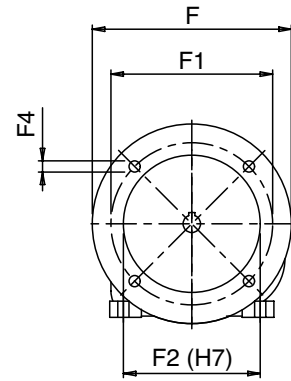
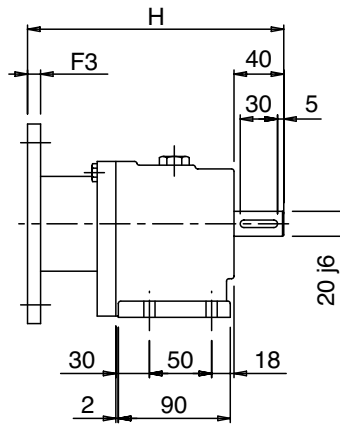
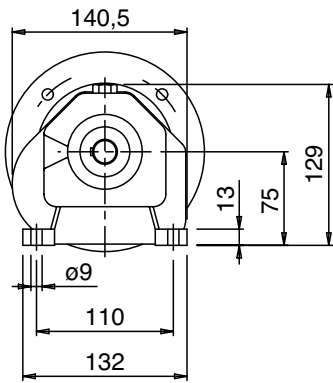
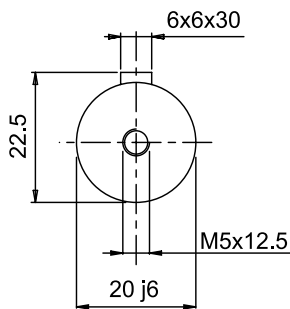


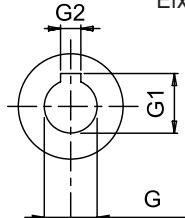
## MNHL 20 PAM



Albero uscita (1)  
Output shaft  
Abtriebswelle  
Arbre sortie  
Eje salida  
Eixo saída



Albero entrata  
Input shaft  
Antriebswelle  
Arbre entrée  
Eje entrada  
Eixo entrada



i	20/2 PAM		
4,32		71*	80*
5,13		71*	80*
6,1		71*	80*
7,28		71*	80*
8,76		71*	80*
10,67		71*	80*
12,27	63	71*	80*
14,25	63	71*	80*
16,76	63	71*	80*
20,04	63	71*	80*
24,1	63	71*	
27,43	63	71*	
31,24	56	63	71*
37,94	56	63	71*
43,17	56	63	71*
49,14	56	63	71*

20/2	G	G1	G2	F	F1	F2	F3	F4	H
/2....56 B5 /2F....56 B5	9	10,4	3	120	100	80	8	7	208
/2....63 B5 /2F....63 B5	11	12,5	4	140	115	95	12	9	207
/2....71 B5 /2F....71 B5	14	16	5	160	130	110	10,5	9	206
/2....80 B5 /2F....80 B5	19	21,5	6	200	165	130	10,5	11	206

(\* PAM disponibile anche in B14; per eventuali informazioni sugli ingombri, rivolgersi al nostro ufficio tecnico.

(\* PAM disponible également en B14; pour d'éventuelles informations sur les encombrements, s'adresser à notre bureau technique.

(\* Available also in PAM B14; further information on the outline can be required to our technical department.

(\* PAM disponible también en B14; para posibles datos acerca de las dimensiones, consultar a nuestra oficina técnica.

(\* Bereit auch mit PAM B14; für Informationen über Abmessungen, bitte, wenden Sie sich an unsere Technisch Abteilung.

(\* PAM disponível também em B14; para eventuais informações sobre as dimensões, contate a nossa divisão técnica.