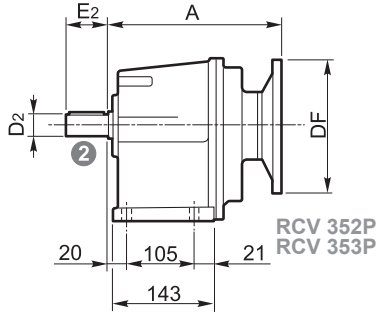
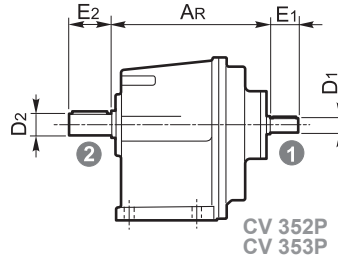


DIMENSIONI / DIMENSIONS / ABMESSUNGEN / DIMENSIONS / DIMENSIONES / DIMENSÕES

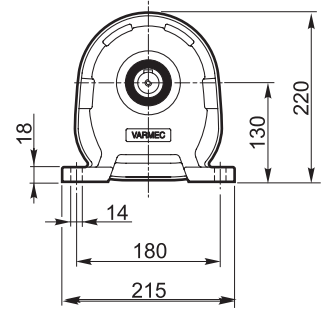
P



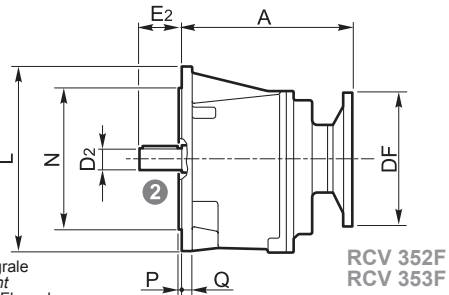
RCV 352P
RCV 353P



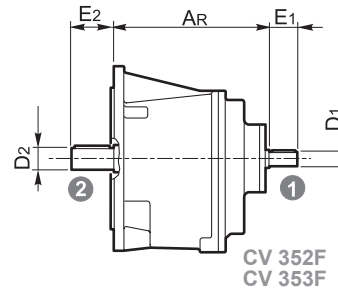
CV 352P
CV 353P



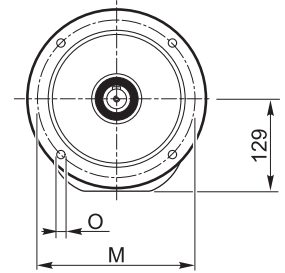
F



RCV 352F
RCV 353F

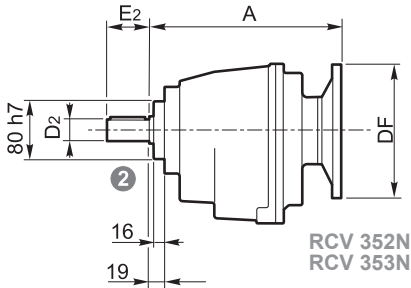


CV 352F
CV 353F

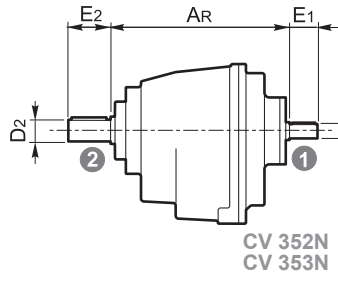


N.B.
F = Flangia integrale
F = Flange mount
F = Integriertem Flansch
F = Bride monobloc
F = Brida integral
F = Brida integral

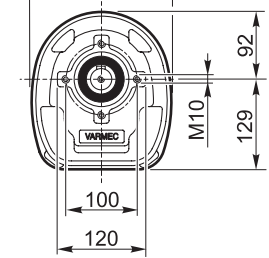
N



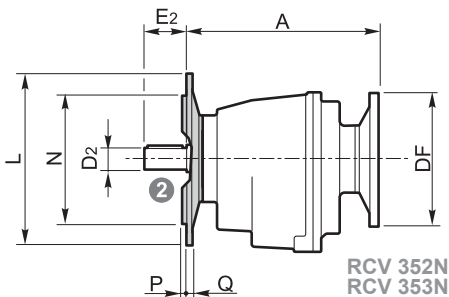
RCV 352N
RCV 353N



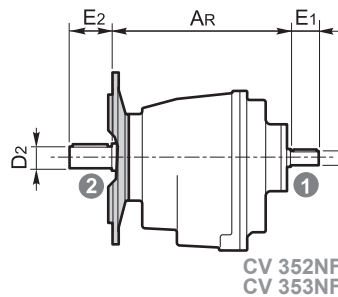
CV 352N
CV 353N



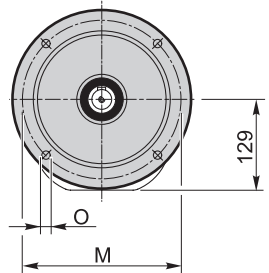
NF



RCV 352NF..
RCV 353NF..



CV 352NF..
CV 353NF..



	L	M	N h8	O	P	Q
NF160	160	130	110	11	3.5	11
NF200	200	165	130	13	3.5	11
NF250	250	215	180	14	4	11
F250	250	215	180	14	4	13

P - F

RCV CV	RCV							CV
	IEC	DF		A	NEMA	DF	A	
		(B5)	(B14)					
352	71	160		224	140	165.1	234	219
	80	200			180	228.6	240	
	90	200						
	100	250	160					
	112	250	160					
	132	300	200		253			
353	63	140		221	56	165.1	229	214
	71	160			140	165.1	229	
	80	200						
	90	200	140					

N - NF

RCV CV	RCV							CV
	IEC	DF		A	NEMA	DF	A	
		(B5)	(B14)					
352	71	160		249	140	165.1	259	244
	80	200			180	228.6	265	
	90	200						
	100	250	160					
	112	250	160					
	132	300	200		278			
353	63	140		246	56	165.1	254	239
	71	160			140	165.1	254	
	80	200						
	90	200	140					