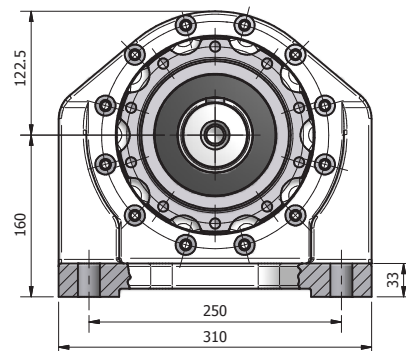
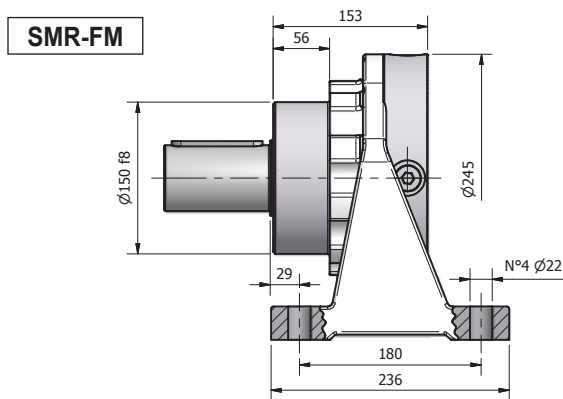
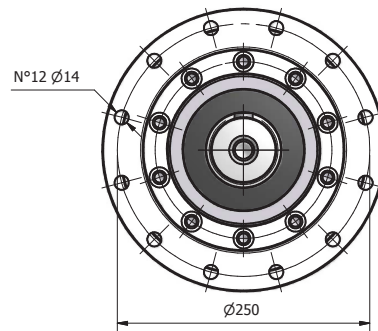
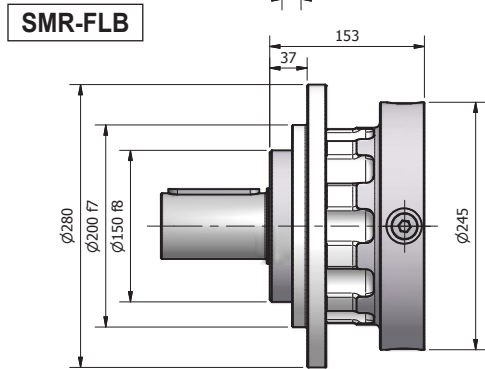
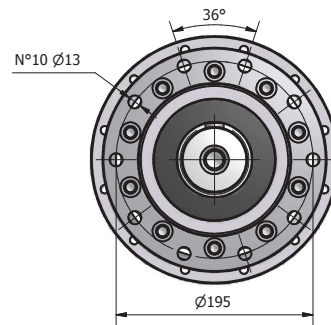
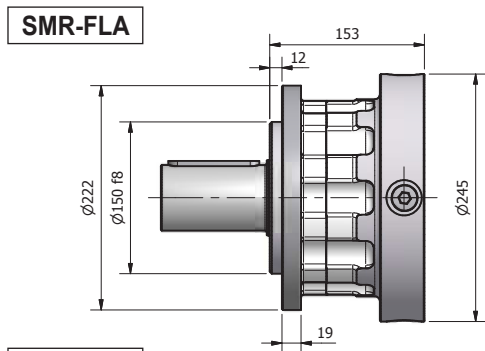
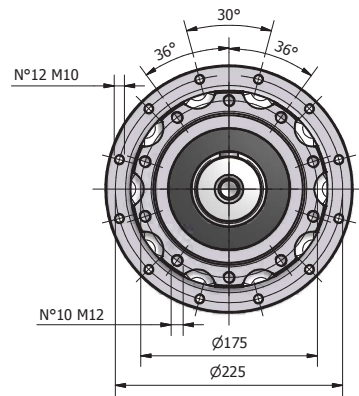
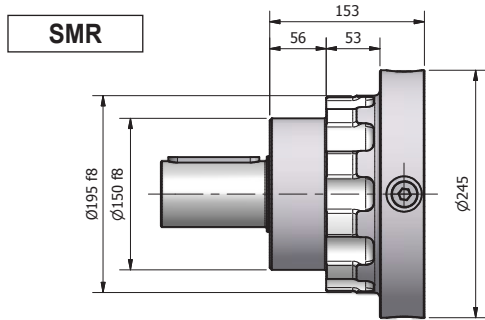


DIMENSIONI	IT	DIMENSIONS	EN	ABMESSUNGEN	DE
DIMENSIONS	FR	DIMENSIONES	ES	DIMENSÕES	PT
SUPPORTI USCITA NRG 40	IT	OUTPUT BEARING ASSEMBLIES NRG 40	EN	ABTRIEBSLAGER NRG 40	DE
SUPPORTS SORTIE NRG 40	FR	SOPORTES SALIDA NRG 40	ES	SUPOORTE DE SAIDA NRG 40	PT



ALBERI USCITA NRG 40

IT

OUTPUT SHAFTS NRG 40

EN

ABTRIEBSWELLEN NRG 40

DE

ARBRES SORTIE NRG 40

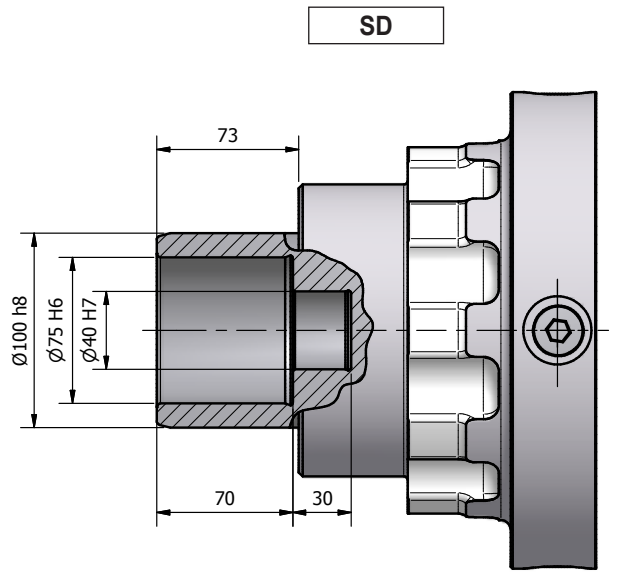
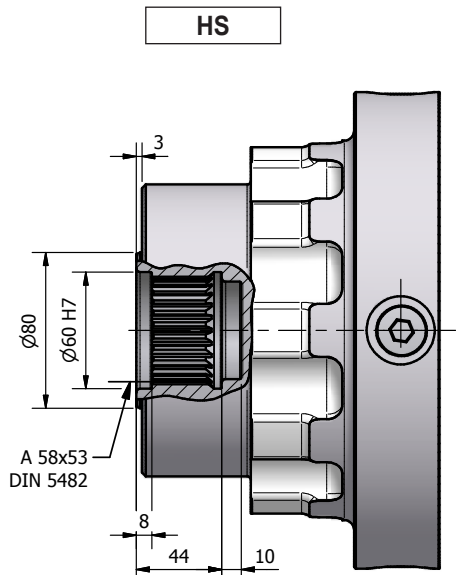
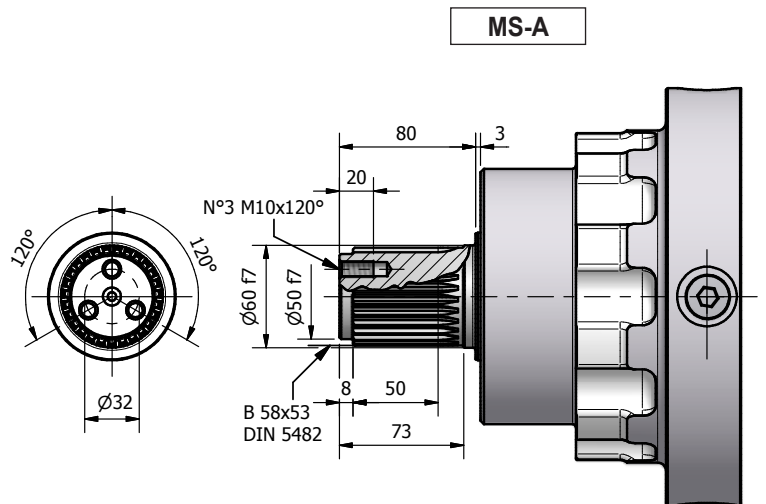
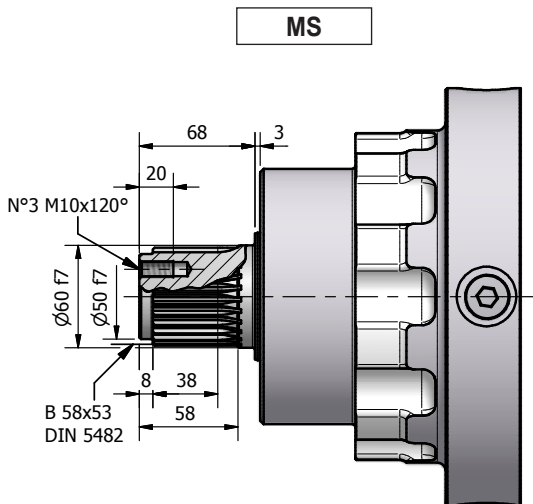
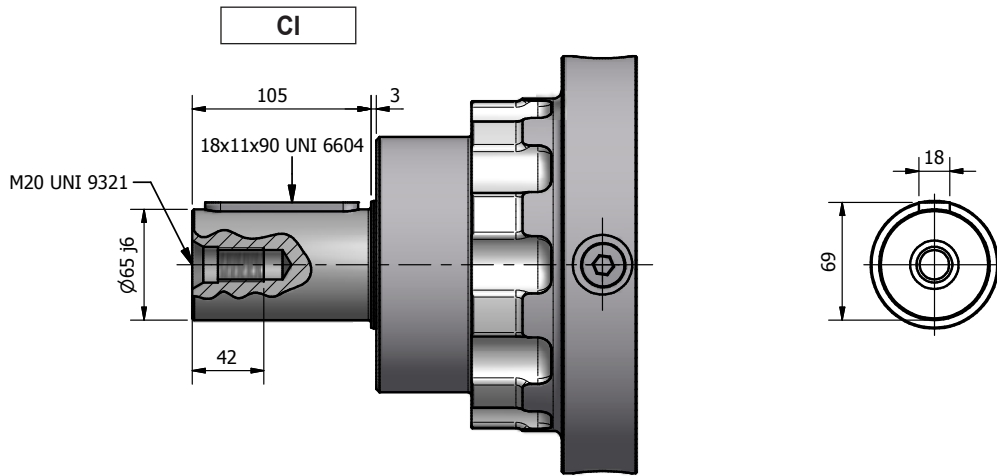
FR

EJES SALIDA NRG 40

ES

EIXOS SAÍDA NRG 40

PT



CORPI NRG 40 L

IT

NRG 40 L HOUSINGS

EN

GEHÄUSE NRG 40 L

DE

CORPS NRG 40 L

FR

CUERPOS NRG 40 L

ES

CORPO NRG 40 L

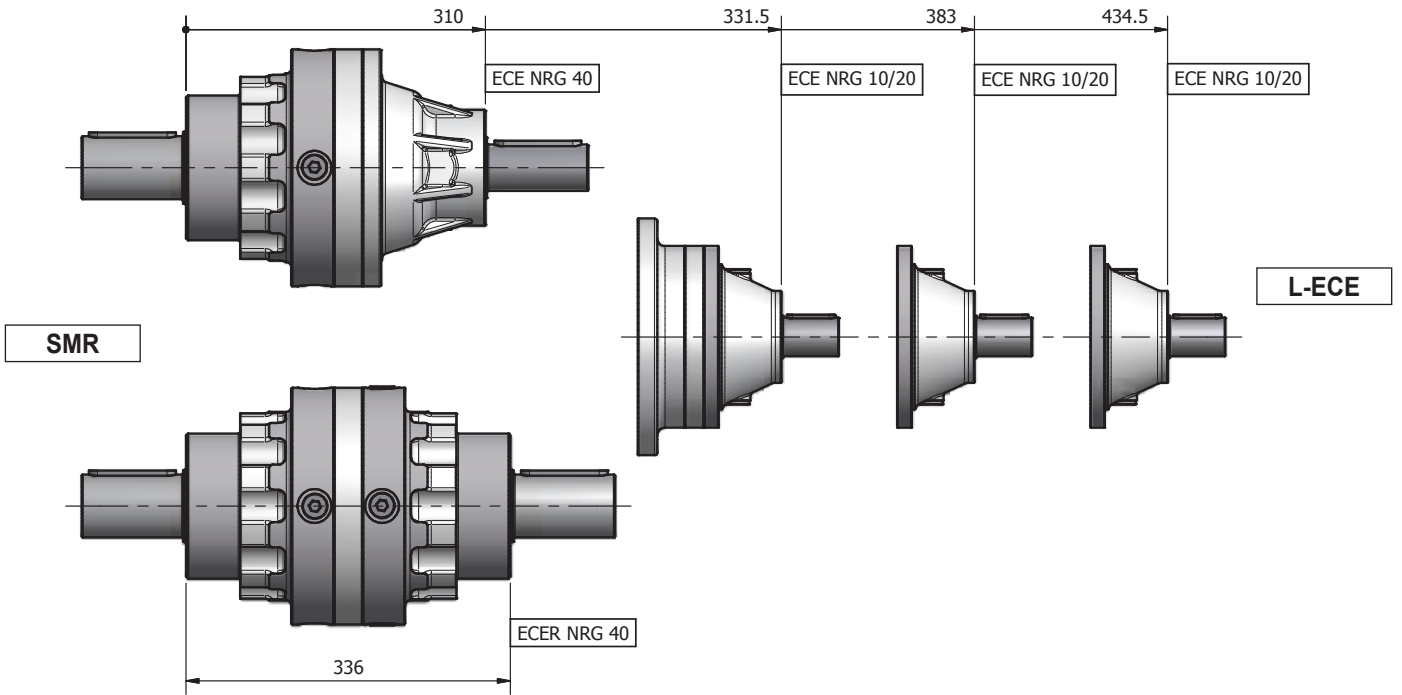
PT

NRG 40/1 L

NRG 40/2 L

NRG 40/3 L

NRG 40/4 L

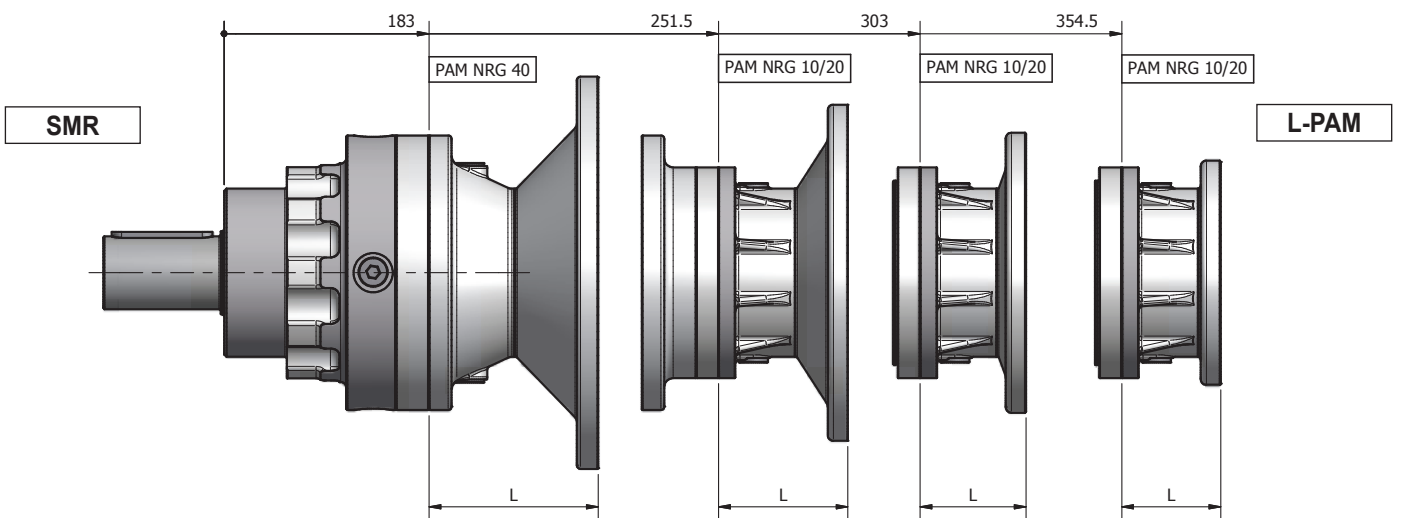


NRG 40/1 L

NRG 40/2 L

NRG 40/3 L

NRG 40/4 L



CORPI NRG 40 R - V

IT

NRG 40 R - V HOUSINGS

EN

GEHÄUSE NRG 40 R - V

DE

CORPS NRG 40 R - V

FR

CUERPOS NRG 40 R - V

ES

CORPO NRG 40 R - V

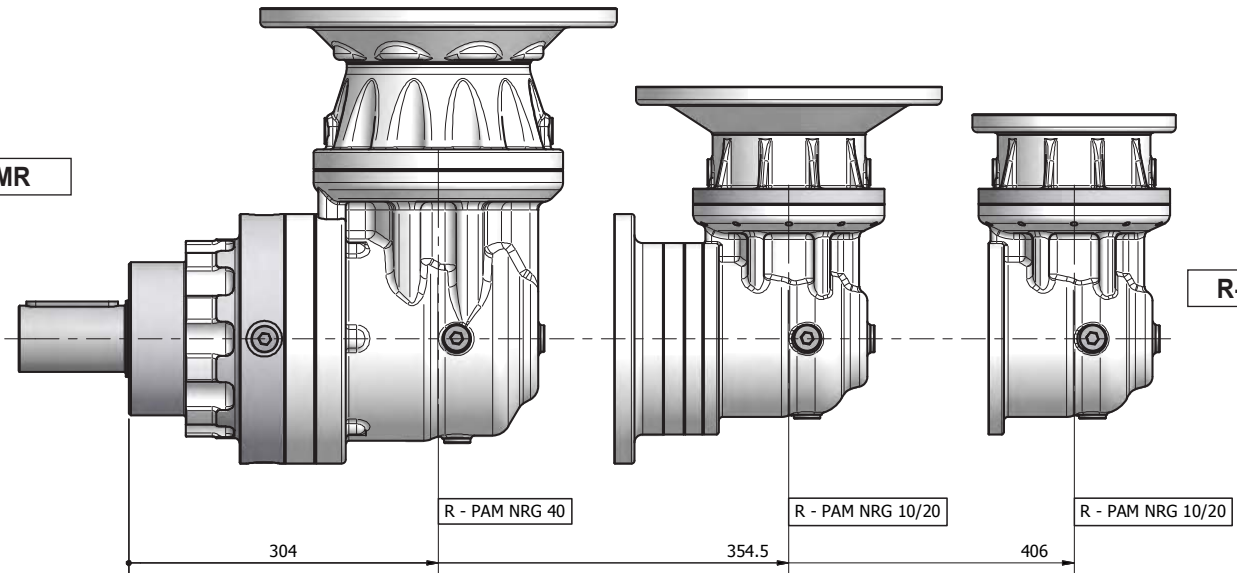
PT

NRG 40/2 R

NRG 40/3 R

NRG 40/4 R

SMR

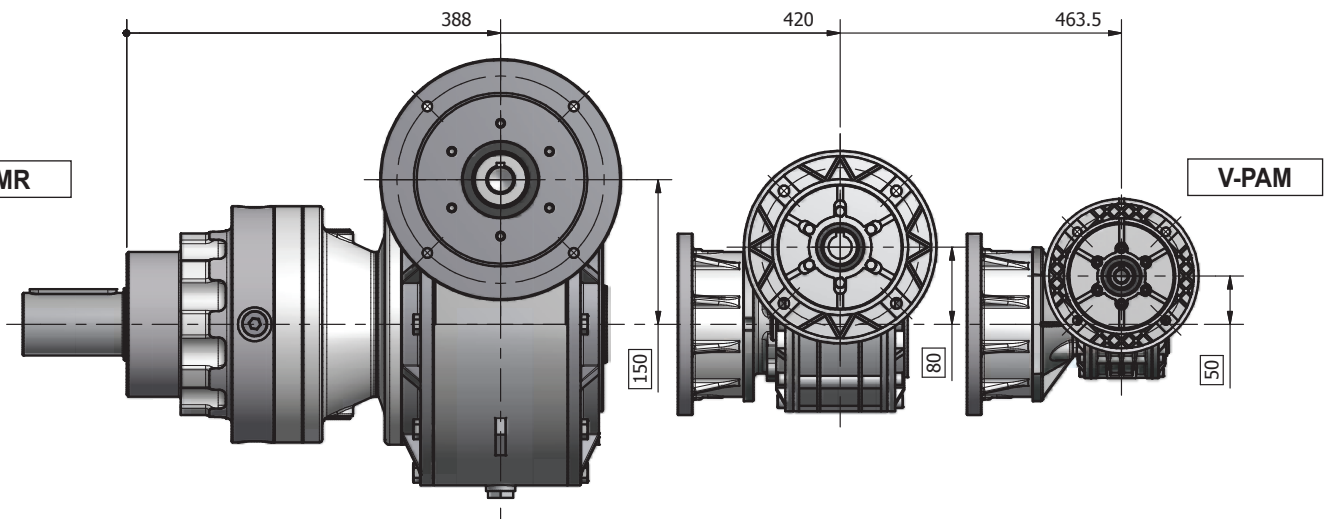


NRG 40/2 V

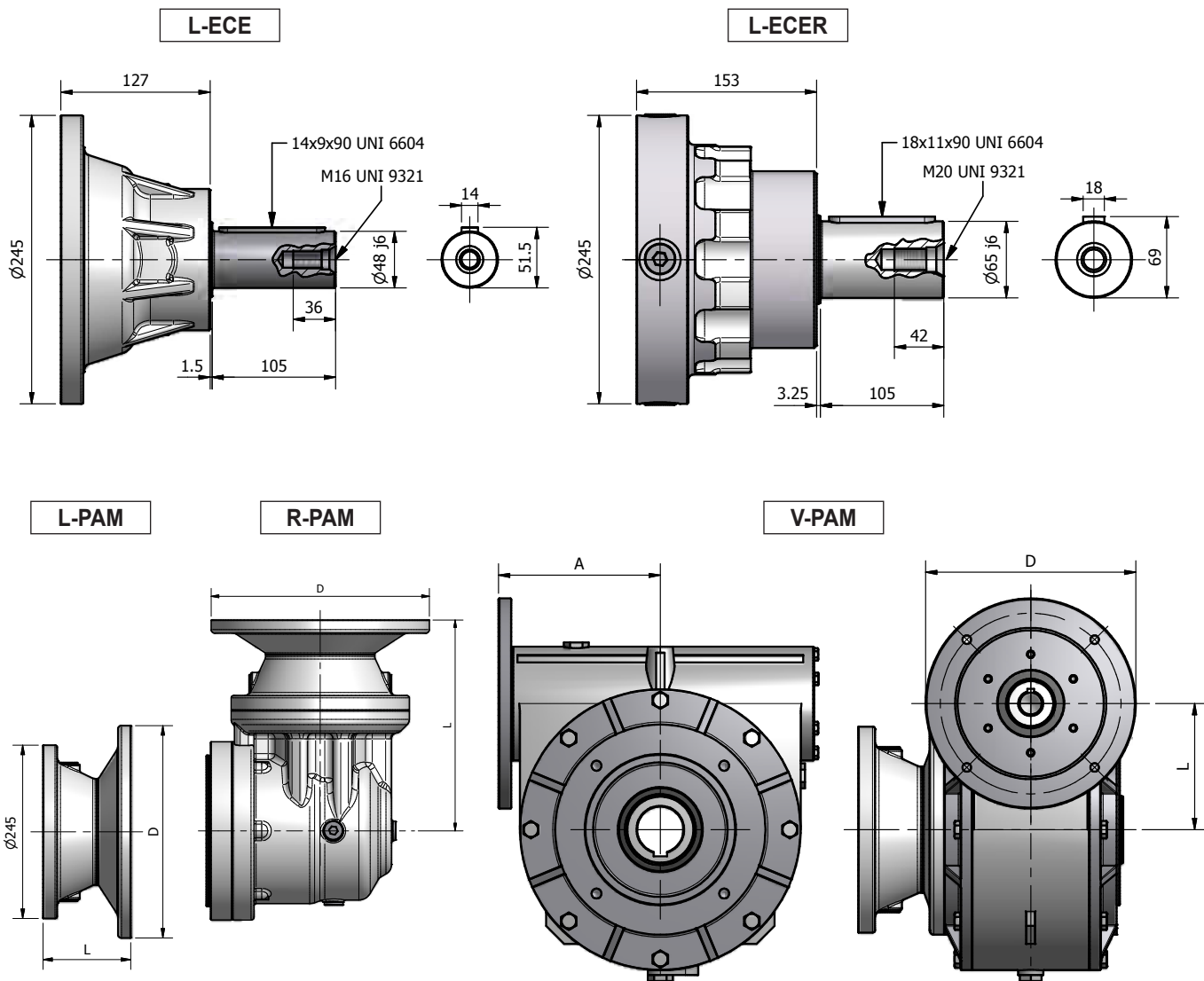
NRG 40/3 V

NRG 40/4 V

SMR



SUPPORTI ENTRATA NRG 40	IT	INPUT BEARING ASSEMBLIES NRG 40	EN	ANTRIEBSLAGER NRG 40	DE
SUPPORTS ENTRE'E NRG 40	FR	SOPORTES ENTRADA NRG 40	ES	SUPOORTE DE ENTRADA NRG 40	PT



	L-PAM																							
	PAM 63		PAM 71		PAM 80		PAM 90		PAM 100		PAM 112		PAM 132		PAM 160		PAM 180		PAM 200		PAM 225			
	L	D	L	D	L	D	L	D	L	D	L	D	L	D	L	D	L	D	L	D	L	D		
NRG 40/1 L	93	140	77	160	97	200	97	200	103	250	103	250	124	300	159	350	159	350	159	400	189	450		
NRG 40/2 L	84,5	140	68,5	160	88,5	200	88,5	200	94,5	250	94,5	250	115,5	300	142,5	350								
NRG 40/3 L	84,5	140	68,5	160	88,5	200	88,5	200	94,5	250	94,5	250	115,5	300										
NRG 40/4 L	84,5	140	68,5	160	88,5	200	88,5	200																

	R-PAM																			
	PAM 63		PAM 71		PAM 80		PAM 90		PAM 100		PAM 112		PAM 132		PAM 160					
	A	L	A	L	A	L	A	L	A	L	A	L	A	L	A	L				
NRG 40/2 R	258,8	140	242,8	160	262,8	200	262,8	200	268,8	250	268,8	250	289,8	300	324,8	350	324,8	350	324,8	400
NRG 40/3 R	216,6	140	200,6	160	220,6	200	220,6	200	226,6	250	226,6	250	247,6	300	274,6	350				
NRG 40/4 R	216,6	140	200,6	160	220,6	200	220,6	200	226,6	250										

		V-PAM																							
		PAM 63			PAM 71			PAM 80			PAM 90			PAM 100			PAM 112			PAM 132			PAM 160		
		A	L	D	A	L	D	A	L	D	A	L	D	A	L	D	A	L	D	A	L	D	A	L	D
NRG 40/2 V	B5	-	-	-	-	-	-	-	-	-	-	-	-	193	150	250	193	150	250	192,5	150	300	202	150	350
NRG 40/3 V	B5	-	-	-	-	-	-	109	80	200	109	80	200	112	80	250									
	B14	-	-	-	-	-	-	109,5	80	120	109,5	80	140	118	80	160									
NRG 40/4 V	B5	80	50	140	81	50	160	-	-	-															
	B14	80	50	90	81	50	105	81	50	120															

ACCESSORI NRG 40

IT

ACCESSORIES NRG 40

EN

ZUBEHÖR NRG 40

DE

ACCESSOIRES NRG 40

FR

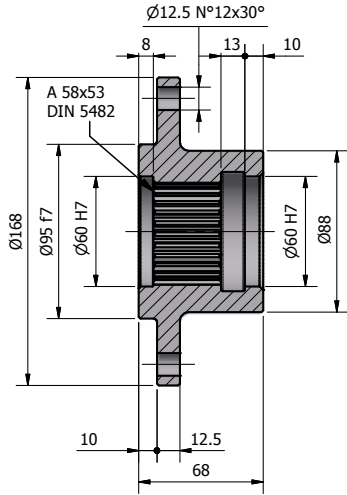
ACCESORIOS NRG 40

ES

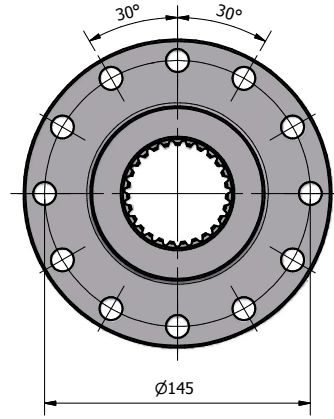
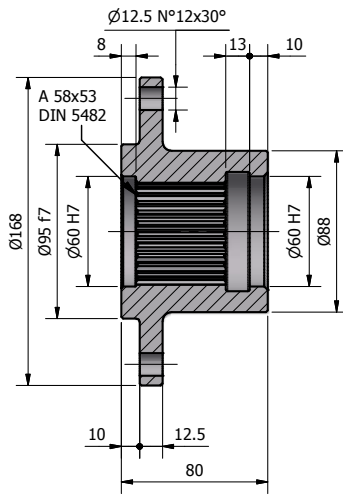
ACESSÓRIOS NRG 40

PT

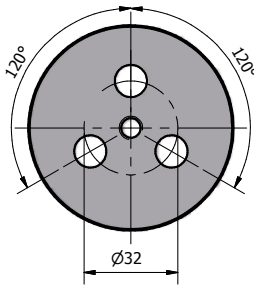
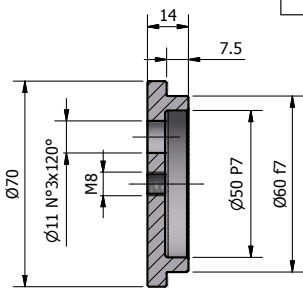
FS



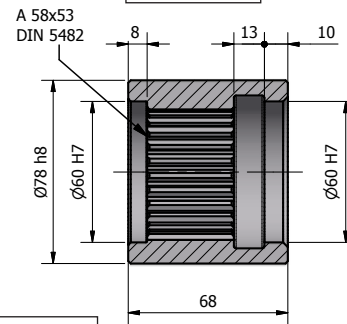
FS-A



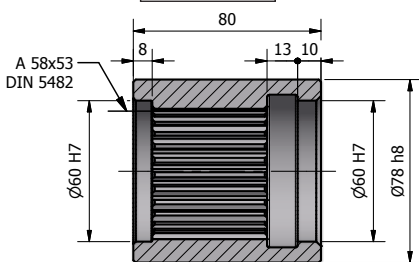
RF



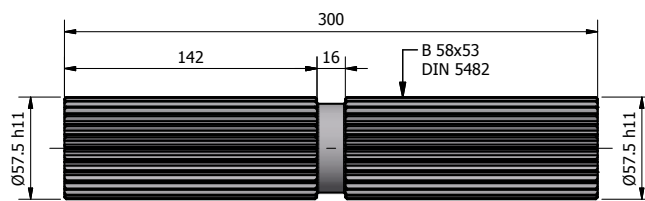
SS



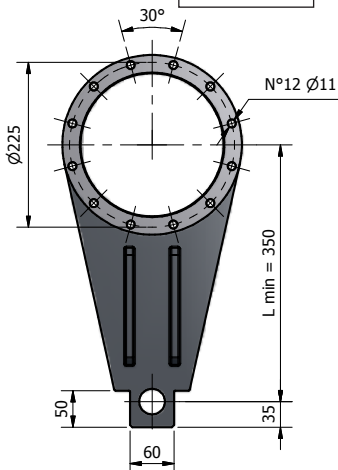
SS-A



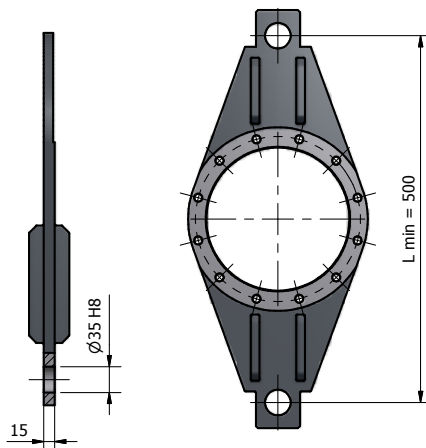
BS



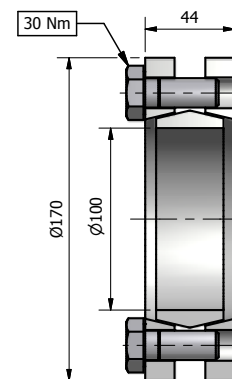
BR



BR-D



GA



Coppia max. 7,5 kNm
 Max. torque 7,5 kNm
 Max. Drehmoment 7,5 kNm
 Couple maxi 7,5 kNm
 Par máximo 7,5 kNm
 Torque max. 7,5 kNm