

PARTI DI RICAMBIO

IT

Per consultare il catalogo ricambi rivolgersi all'Assistenza Tecnica della SITI S.p.A. e richiedere la documentazione cartacea o il CD-ROM interattivo (quando disponibile).

SPARE PARTS

EN

To check the spare parts catalogue, contact the SITI S.p.A. Technical Service Department and require a hard copy of the documentation or the interactive CD-ROM (when available).

ERSATZTEILE

DE

Für den Ersatzteilkatalog wenden Sie sich bitte an unsere technische Abteilung; auf dieser Weise erhalten Sie die Papierunterlagen oder die interaktive CD-ROM (falls verfügbar).

PIÈCES DE RECHANGE

FR

Pour consulter le catalogue pièces de rechange, veuillez vous adresser à l'Assistance Technique de SITI S.p.A. et demander la documentation sur papier ou le CD-ROM interactif (si disponible).

PIEZAS DE REPUESTO

ES

Para consultar el catálogo de recambios diríjase a la Oficina de asistencia técnica de SITI S.p.A. y solicite la documentación en papel o el CD-ROM interactivo (cuando esté disponible).

PEÇAS DE REPOSIÇÃO

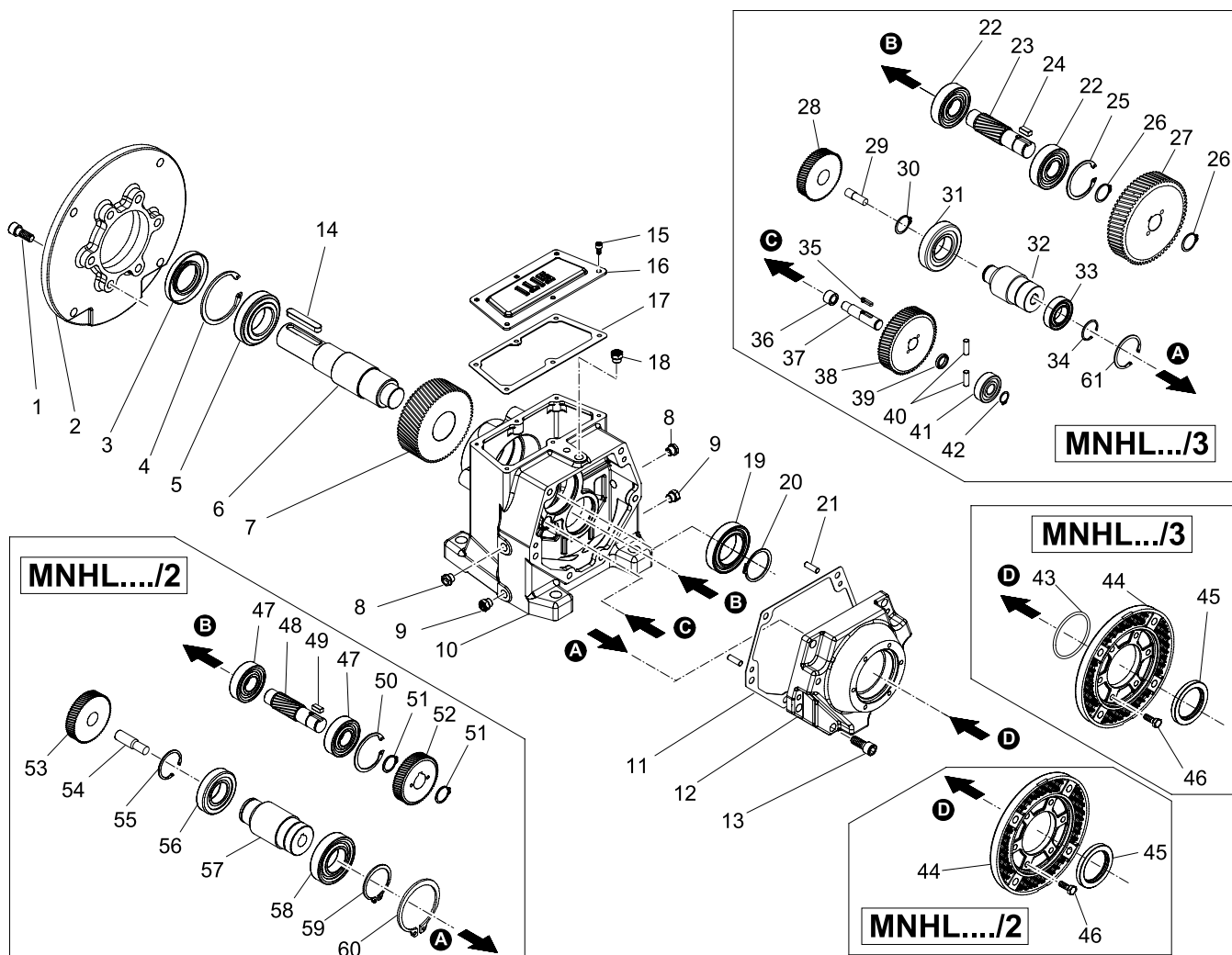
PT

Para consultar o catálogo das peças de reposição entre em contato com a Assistência Técnica da SITI S.p.A. e solicite a documentação em catálogo ou CD-ROM interativo (quando disponível).



RIDUTTORI COASSIALI - HELICAL INLINE GEARBOXES - STIRNRADGETRIEBE RÉDUCTEURS COAXIAUX - REDUCTORES COAXIALES - REDUTORES COAXIAIS

MNHL 20 ÷ 100



MNHL .../2

	Cuscinetto Bearing Lager Roulement Cojinete Rolamento					Anello di tenuta Shaft seal Wellendichtung Joint d'étanchéité Anillo de retención Retentor	
	5	19	47	56	58	45	3
MNHL20	6204-2RS	6204	6201	6004	6007	35x55x10 BASL	24x47x7 BASL
MNHL25/2	6206	6205	6302	6005	6008-2RS	40x60x10 BASL	30x62x8 BASL
MNHL30/2	6208	6206	6304	6205	6008-2RS	40x60x10 BASL	40x80x10 BASL
MNHL35/2	6208	6206	30304	6305	6008-2RS	40x60x10 BASL	40x80x10 BASL
MNHL40/2	30209	30207	6305	6208	6010-2RS	50x72x8 BASL	45x85x10 BASL
MNHL50/2	30211	30210	6307	NJ 208 E	6010-2RS	50x72x8 BASL	55x100x10 BASL
MNHL60/2	30213	32212	32208	NJ 209 EC	6015-2RS	75x100x10	65x120x12 BASL
MNHL70/2	30215	30215	32210	NJ 210 E	6015-2RS	75x100x10	75x130x12 BASL
MNHL90/2	32219	32216	32212	PAM 132-160-180-200			95x170x13 BASL
				NJ 2212 E	6015-2RS	75x100x10	
				PAM 225-250			
				NJ 313 EC	6026-2RS	130x170x12	
				200 GC			
				NJ 2213 EC	6219-2RS	108x170x15 BASL	
				225 - 250 GC			
NJ 313 EC	6026 2RS	145x175x15 BASL					
MNHL100/2	32221	32221	32214	PAM 132-160-180-200			105x190x12 BASL
				NJ 2210 E	6015-2RS	75x100x10	
				PAM 225-250			
				NJ 313 EC	6026-2RS	130x170x12	
				200 GC			
				NJ 2213 EC	6219-2RS	108x170x15 BASL	
				225 - 250 GC			
NJ 313 EC	6026 2RS	145x175x15 BASL					

	Cuscinetto Bearing Lager Roulement Cojinete Rolamento					Anello di tenuta Shaft seal Wellendichtung Joint d'étanchéité Anillo de retención Retentor	
	5	19	47	56	58	3	45
NHL20	6204-2RS	6204	6201	6004	6007	24x47x7 BASL	35x55x10 BASL
NHL25/2	6206	6205	6302	6005	6207-2RS	30x62x8 BASL	35x72x10 BASL
NHL30/2	6208	6206	6304	6205	6207-2RS	40x80x10 BASL	35x72x10 BASL
NHL35/2	6208	6206	30304	6205	6207-2RS	40x80x10 BASL	35x72x10 BASL
NHL40/2	30209	30207	6305	6208	6208-2RS	45x85x10 BASL	40x80x10 BASL
NHL50/2	30211	30210	6307	NJ 208 E	6208-2RS	55x100x10 BASL	40x80x10 BASL
NHL60/2	30213	32212	32208	NJ 209 EC	6310-2RS	65x120x12 BASL	50x72x8 BASL
NHL70/2	30215	30215	32210	NJ 2210 E	6312-2RS	75x130x12 BASL	
NHL90/2	32219	32216	32212	NJ 313 EC	6416	95x170x13 BASL	80x110x10 BASL
NHL100/2	32221	32221	32214	NJ 313 EC	6416	105x190x12 BASL	80x110x10 BASL

MNHL .../3

	Cuscinetto Bearing Lager Roulement Cojinete Rolamento							Anello di tenuta Shaft seal Wellendichtung Joint d'étanchéité Anillo de retención Retentor	
	5	19	22	31	33	36	41	3	45
MNHL25/3	6206	6205	6302	6004	6007-2RS	HK 1010	6201	30x62x8 BASL	35x55x10 BASL
MNHL30/3	6208	6206	6304	6004	6007-2RS	HK 1015	6301	40x80x10 BASL	35x55x10 BASL
MNHL35/3	6208	6206	30304	6004	6007-2RS	HK 1015	6301	40x80x10 BASL	35x55x10 BASL
MNHL40/3	30209	30207	6305	6005	6008-2RS	HK 1212	6302	45x85x10 BASL	40x60x10 BASL
MNHL50/3	30211	30210	6307	6205	6008-2RS	HK 1512	6304	55x100x10 BASL	40x60x10 BASL
MNHL60/3	30213	32212	32208	6208	6010-2RS	HK 2216	6305-2RS	65x120x12 BASL	50x72x8 BASL
MNHL70/3	30215	30215	32210	NJ 208 E	6010-2RS	HK 2820	6307	75x130x12 BASL	50x72x8 BASL
MNHL90/3	32219	32216	32212	NJ 209 EC	6015-2RS	33208	33208	95x170x13 BASL	75x100x10
MNHL100/3	32221	32221	32214	NJ 210 E	6015-2RS	33210	32310	105x190x12 BASL	75x100x10

	Cuscinetto Bearing Lager Roulement Cojinete Rolamento							Anello di tenuta Shaft seal Wellendichtung Joint d'étanchéité Anillo de retención Retentor	
	5	19	22	31	33	36	41	3	45
NHL25/3	6206	6205	6302	6004	6007-2RS	HK 1010	6201	30x62x8 BASL	35x62x7 BASL
NHL30/3	6208	6206	6304	6004	6007-2RS	HK 1015	6301	40x80x10 BASL	35x62x7 BASL
NHL35/3	6208	6206	30304	6004	6007-2RS	HK 1016	6301	40x80x10 BASL	35x62x7 BASL
NHL40/3	30209	30207	6305	6005	6207-2RS	HK 1212	6302	45x85x10 BASL	35x72x10 BASL
NHL50/3	30211	30210	6307	6205	6207-2RS	HK 1512	6304	55x100x10 BASL	35x72x10 BASL
NHL60/3	30213	32212	32208	6208	6208-2RS	HK 2216	6305-2RS	65x120x12 BASL	40x80x10 BASL
NHL70/3	30215	30215	32210	NJ 208 E	6208-2RS	HK 2820	6307	75x130x12 BASL	40x80x10 BASL
NHL90/3	32219	32216	32212	NJ 209 EC	6015-2RS	33208	33208	95x170x13 BASL	50x72x8 BASL
NHL100/3	32221	32221	32214	NJ 2210 E	6312-2RS	33210	32310	105x190x12 BASL	60x85x8 BASL