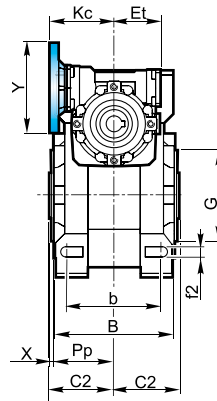
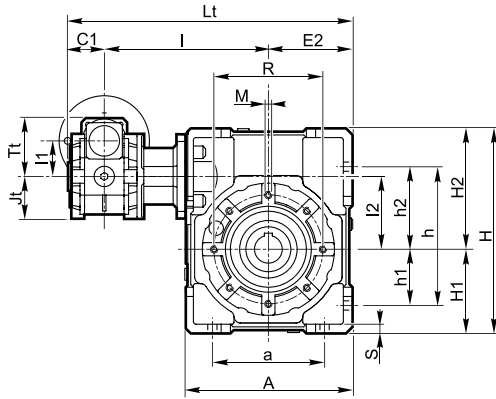


5.6 Dimensioni

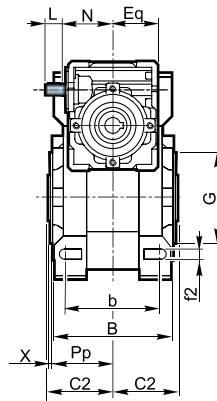
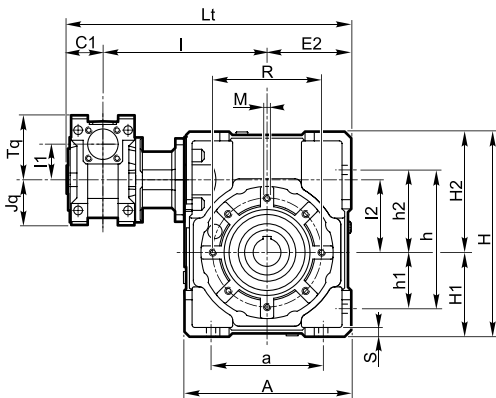
5.6 Dimensions

5.6 Abmessungen

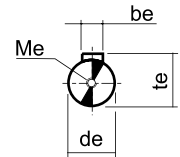
KXC



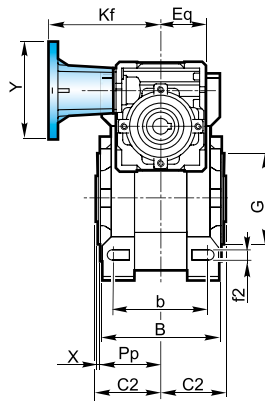
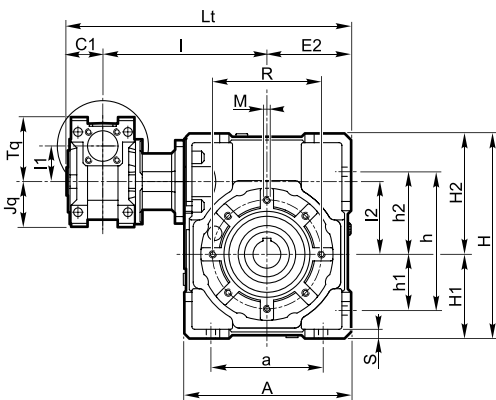
XXA



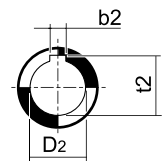
Albero entrata
Input shaft
Antriebswelle



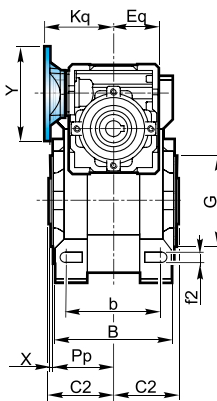
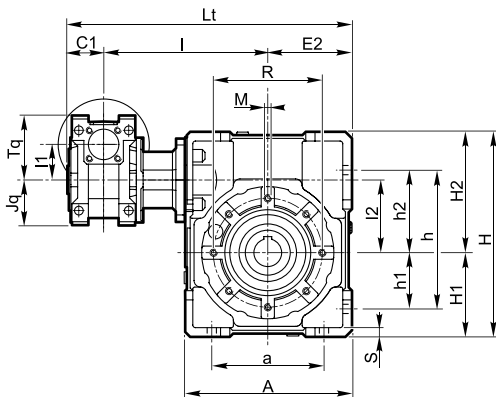
XXF



Albero uscita cavo
Output hollow shaft
Abtriebshohlwelle



XXC

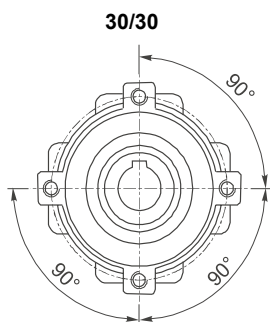


5.6 Dimensioni

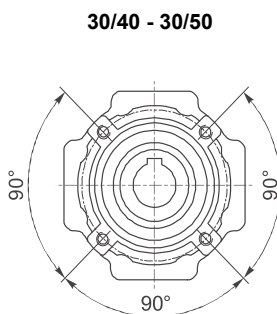
5.6 Dimensions

5.6 Abmessungen

Flangia pendolare / Side cover for shaft mounting / Aufsteckflansch

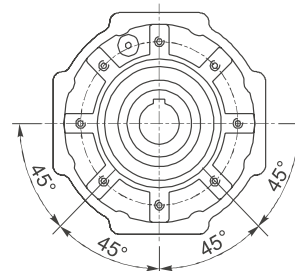


4 Fori / Holes / Bohrungen



4 Fori / Holes / Bohrungen

30/63 - 40/63 - 40/75 - 40/90 - 50/75
50/90 - 50/110 - 63/110 - 63/130



8 Fori / Holes / Bohrungen

KXC - XXC - XXF -XXA																																		
	a	A	b	be	b ₂	B	C ₁	C ₂	de	D ₂ H7	Et	Eq	E ₂	f ₂	G h8	h	h ₁	h ₂	H	H ₁	H ₂													
30/30	54	80	44	3	5	—	56	31.5	9	14	—	41	40	40	6.5	55	71	27	44	97	40	57												
30/40	70	105	60		6	6	71																39	18	19	50	6.5	60	90	35	55	125	50	75
30/50	80	125	70		8	8	85																46	24	60	8.5	70	104	40	64	150	60	90	
30/63 40/63	100	147	85	4	8	—	103	56	11	25	—	51	50	72	9	80	130	50	80	182	72	110												
40/75 50/75	120	176	90																				8	8	112	39	60	14	28	30	60	60	86	11
40/90 50/90	140	203	100	4	10	—	130	39	70	11	35	—	51	50	103	13	110	172	70	102	248.5	103	145.5											
50/110	170	252.5	115	5	12	—	143	46	77.5	14	42	—	60	60	127.5	14	130	210	85	125	310.5	127.5	183											
63/110				6																				56	19	71	72	147.5	15	180	240	100	140	355
63/130	200	292.5	120	6	14	14	155	56	85	19	45	48	—	72	147.5	15	180	240	100	140	355	147.5	207.5											

KXC - XXC - XXF -XXA																					
	l	l ₁	l ₂	Jt	Jq	K _c	K _q	L	L _t	M	Me	N	P _p	R	S	Tt	Tq	t _e	t ₂	X	
30/30	100	31.5	31.5	37.5	40	57	57	15	171.5	M6x8	M4x10	44.5	29	65	5.5	52.5	57	10.2	16.3	—	1.5
30/40	122		40						203.5	M6x10			36.5	75	6				20.8	21.8	1.5
30/50	132		50						223.5	M8x10			43.5	85	7				27.3	27.3	1.5
30/63	145	63	63	43.5	50	75	75	20	248.5	M8x14	M4x12	57.5	53	95	8	68.5	75	12.5	28.3	—	2
40/63	150								261	M8x14			57	115	10				31.3	33.3	2
40/75	174.5	40	75	53.5	60	82	82	25	299.5	M8x14	M5x13	67.5	57	115	10	82.5	90	16	38.3	33.3	2
50/75	190	50	90	43.5	50	75	75	20	322	M8x14	M4x12	57.5	67	130	12	68.5	75	12.2	38.3	—	2
40/90	184.5	40	90	53.5	60	82	82	25	326.5	M10x18	M4x12	57.5	67	130	12	82.5	90	16	45.3	—	2
50/90	200	50	110	64	72	97	95	30	349	M10x18	M5x13	67.5	74	165	14	100.5	110	21.5	45.3	—	2.5
50/110	226								399.5												
63/110	236	63	130	—	72	97	95	30	419.5	M10x18	M8x20	77.5	81	215	15	—	110	21.5	48.8	51.8	3
63/130	256	63	130	—	72	97	95	30	459.5	M12x20	M8x20	77.5	81	215	15	—	110	21.5	48.8	51.8	3