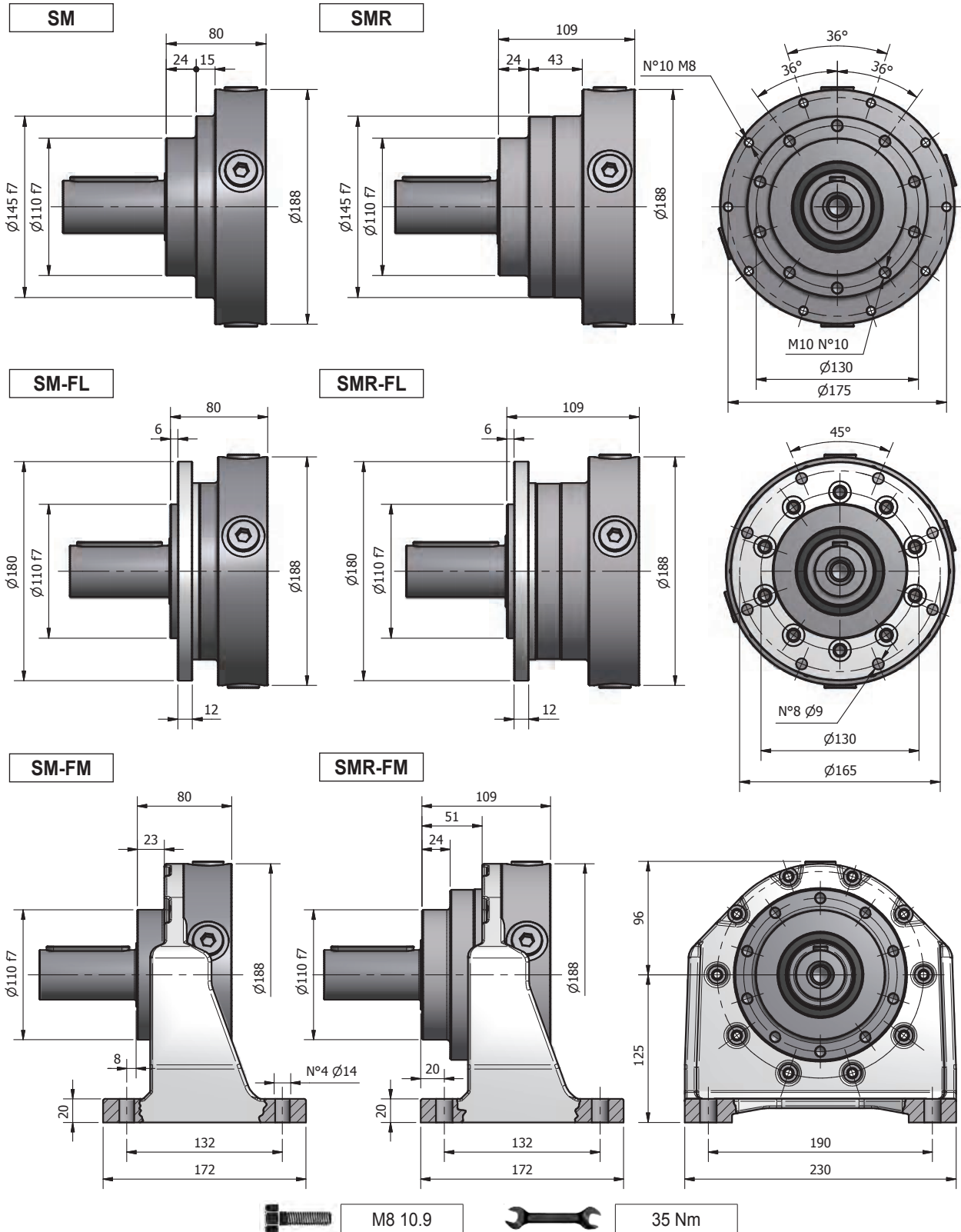


DIMENSIONI	IT	DIMENSIONS	EN	ABMESSUNGEN	DE
DIMENSIONS	FR	DIMENSIONES	ES	DIMENSÕES	PT
SUPPORTI USCITA NRG 10	IT	OUTPUT BEARING ASSEMBLIES NRG 10	EN	ABTRIEBSLAGER NRG 10	DE
SUPPORTS SORTIE NRG 10	FR	SOPORTES SALIDA NRG 10	ES	SUPORTE DE SAIDA NRG 10	PT



ALBERI USCITA NRG 10

IT

OUTPUT SHAFTS NRG 10

EN

ABTRIEBSWELLEN NRG 10

DE

ARBRES SORTIE NRG 10

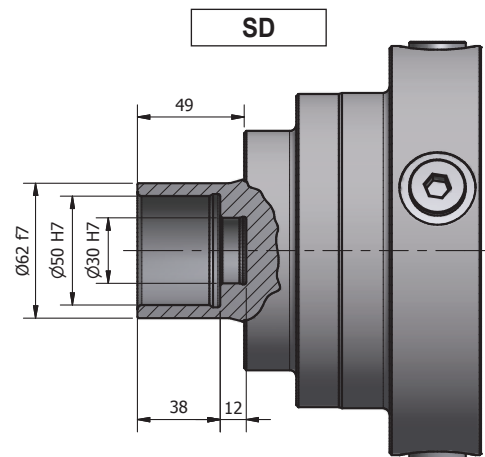
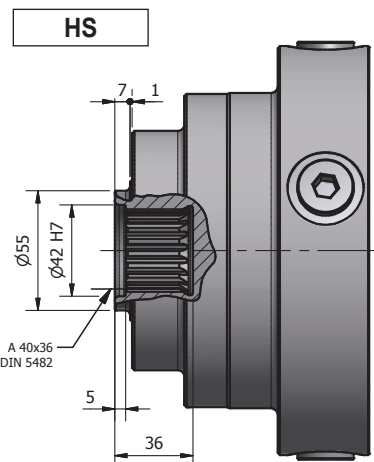
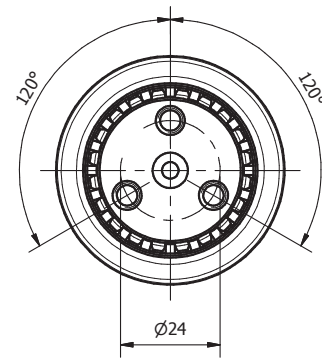
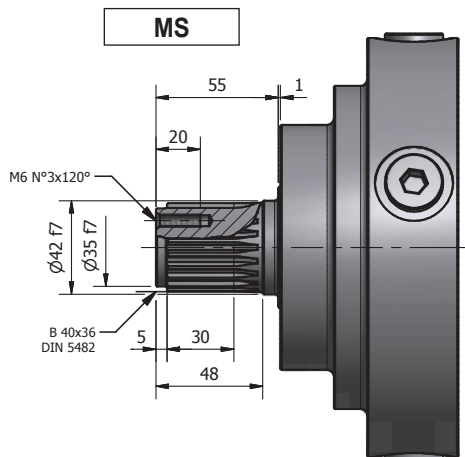
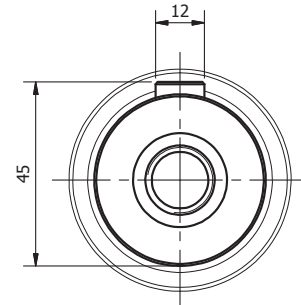
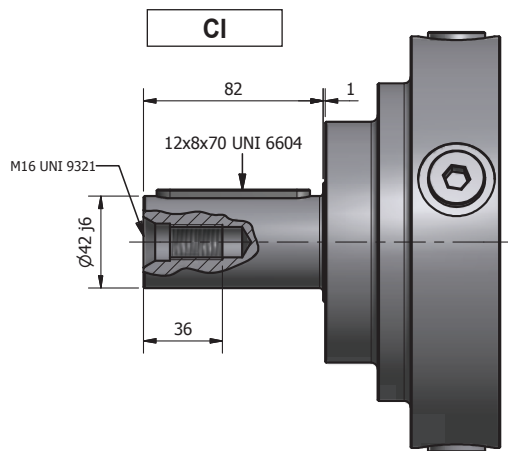
FR

EJES SALIDA NRG 10

ES

EIXOS SAÍDA NRG 10

PT



**CONFIGURAZIONI USCITA / OUTPUT CONFIGURATION / ABTRIEBSKONFIGURATIONEN
CONFIGURATIONS SORTIE / CONFIGURACIÓN SALIDA / CONFIGURAÇÃO DE SAÍDA**

ALBERO USCITA / OUTPUT SHAFT / ABTRIEBSWELLE ARBRE SORTIE / EJE SALIDA / EIXO SAÍDA	SUPPORTO USCITA / OUTPUT BEARING ASSEMBLY / ABTRIEBSLAGER SUPPORT SORTIE / SOPORTE SALIDA / SUPORTE DE SAÍDA					
	SM	SMR	SM - FL	SMR - FL	SM - FM	SMR - FM
CI						
MS						
HS						
SD						

CORPI NRG 10 L

IT

NRG 10 L HOUSINGS

EN

GEHÄUSE NRG 10 L

DE

CORPS NRG 10 L

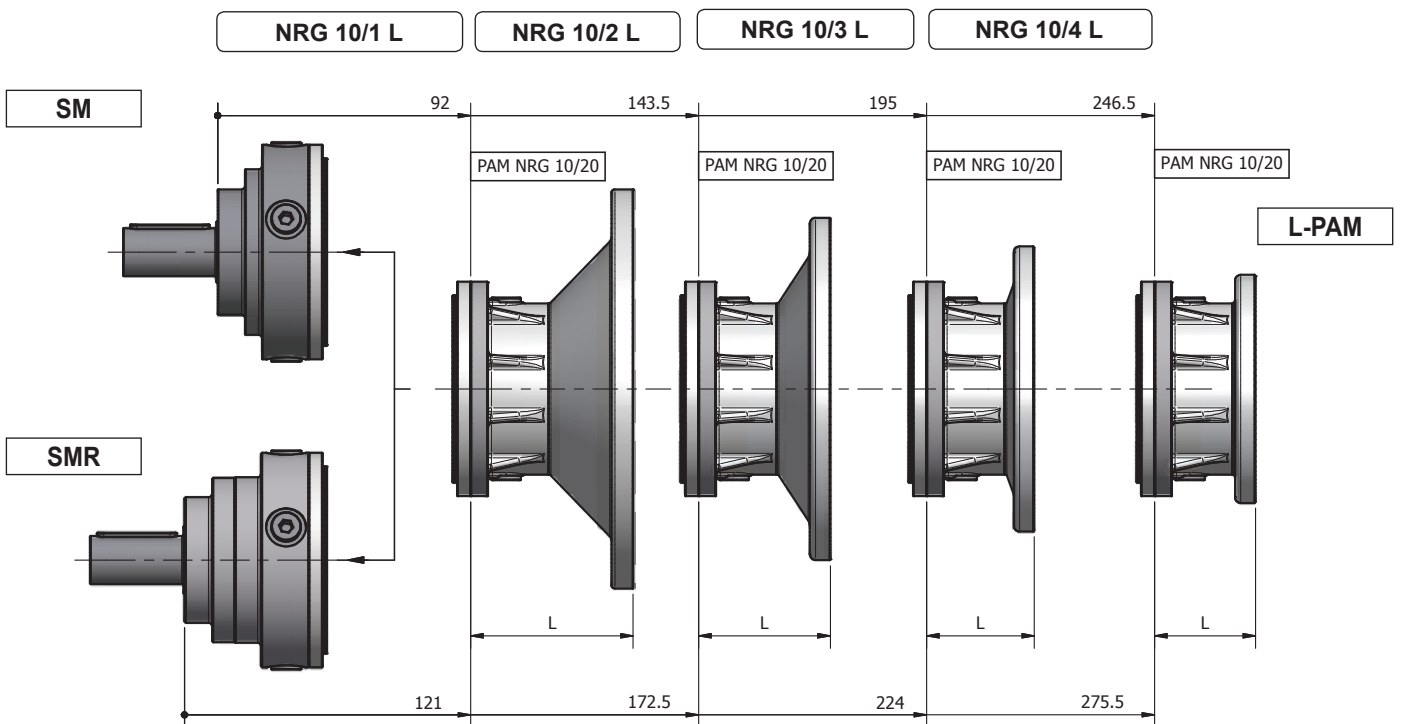
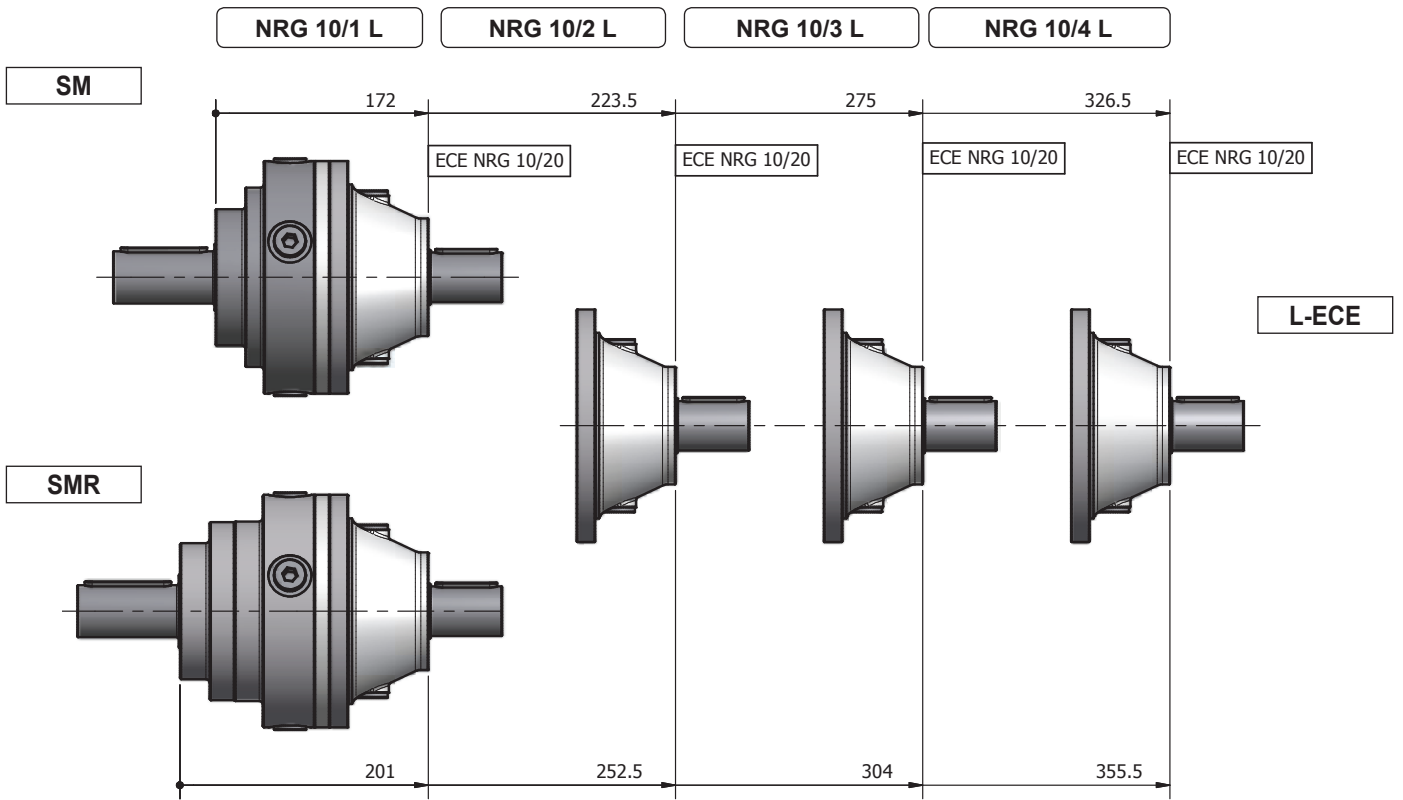
FR

CUERPOS NRG 10 L

ES

CORPO NRG 10L

PT



CORPI NRG 10 R - V

IT

NRG 10 R - V HOUSINGS

EN

GEHÄUSE NRG 10 R - V

DE

CORPS NRG 10 R - V

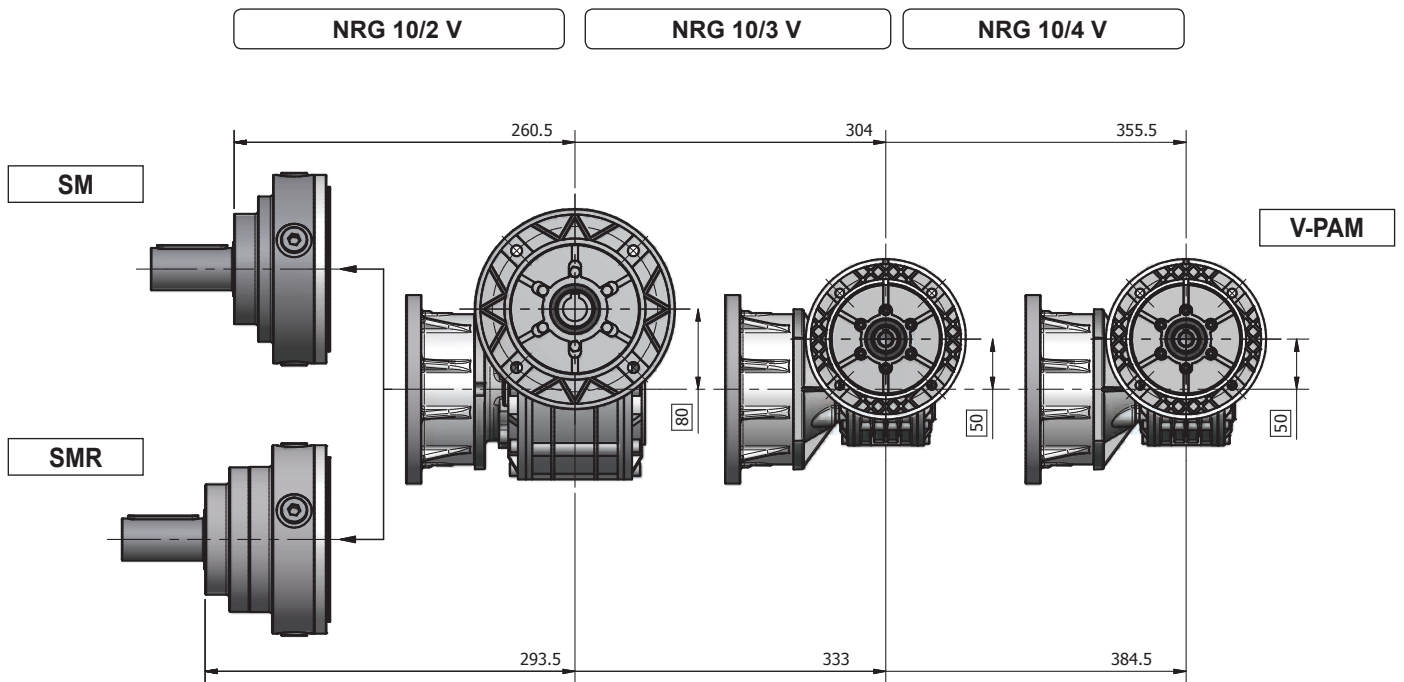
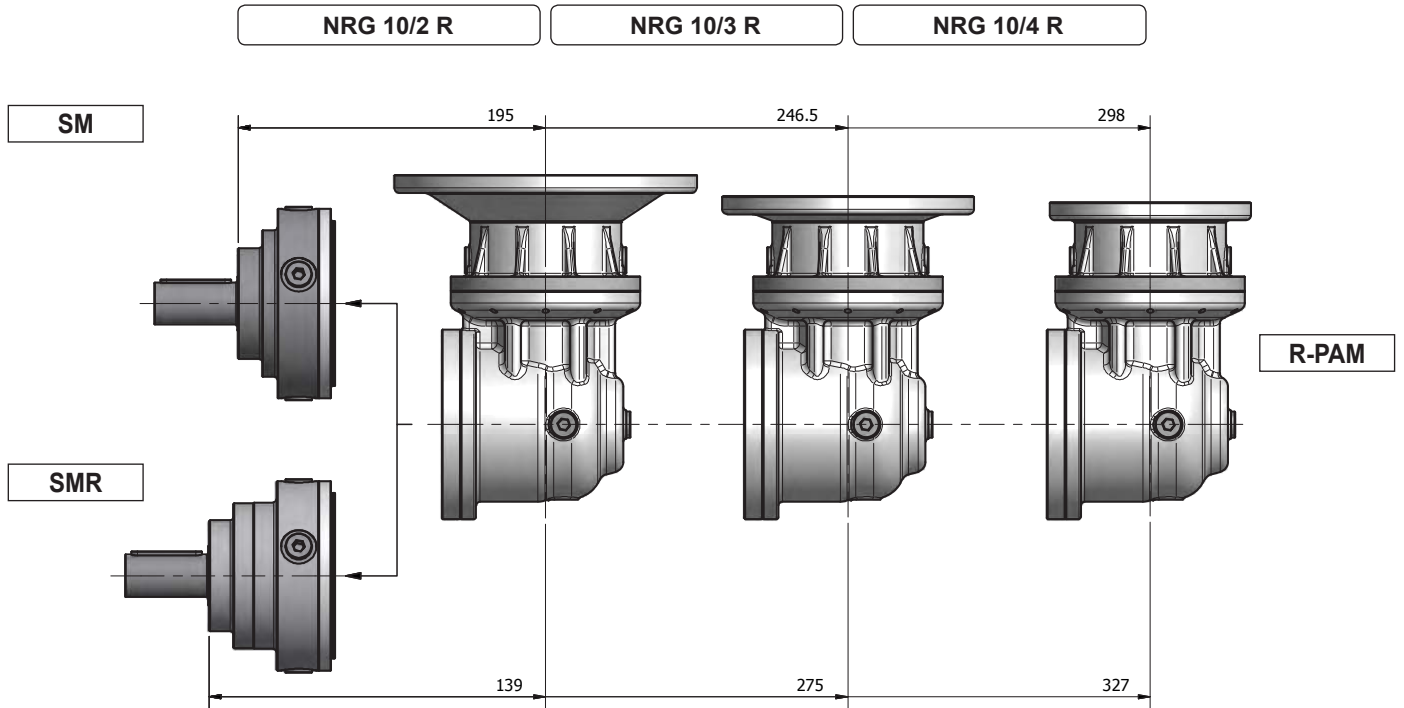
FR

CUERPOS NRG 10 R - V

ES

CORPO NRG 10 R - V

PT



SUPPORTI ENTRATA NRG 10

IT

INPUT BEARING ASSEMBLIES
NRG 10

EN

ANTRIEBSLAGER NRG 10

DE

SUPPORTS ENTRE'E NRG 10

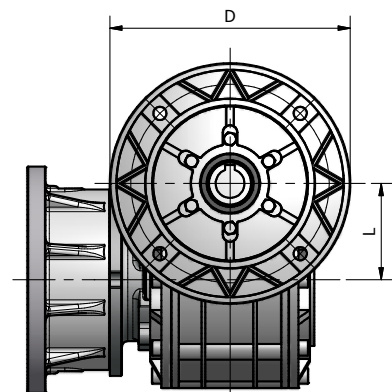
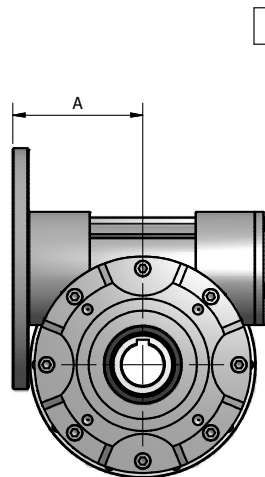
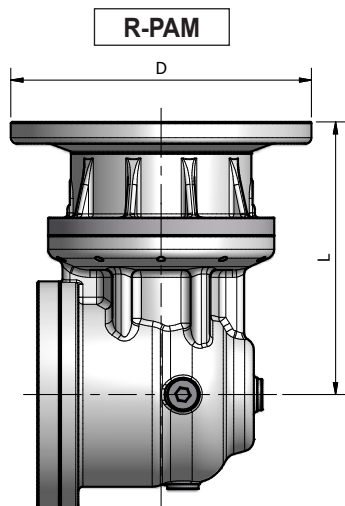
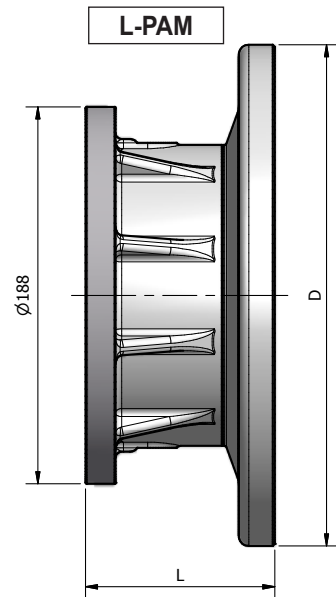
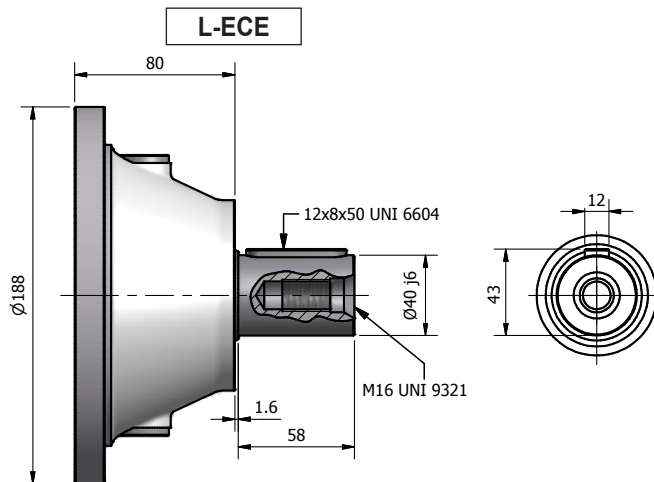
FR

SOPORTES ENTRADA NRG 10

ES

SUPORTE DE ENTRADA NRG 10

PT



L-PAM

	PAM 63		PAM 71		PAM 80		PAM 90		PAM 100		PAM 112		PAM 132		PAM 160	
	L	D	L	D	L	D	L	D	L	D	L	D	L	D	L	D
NRG 10/1	84,5	140	68,5	160	88,5	200	88,5	200	94,5	250	94,5	250	115,5	300	142,5	350
NRG 10/2	84,5	140	68,5	160	88,5	200	88,5	200	94,5	250	94,5	250	115,5	300		
NRG 10/3	84,5	140	68,5	160	88,5	200	88,5	200	94,5	250						
NRG 10/4	84,5	140	68,5	160												

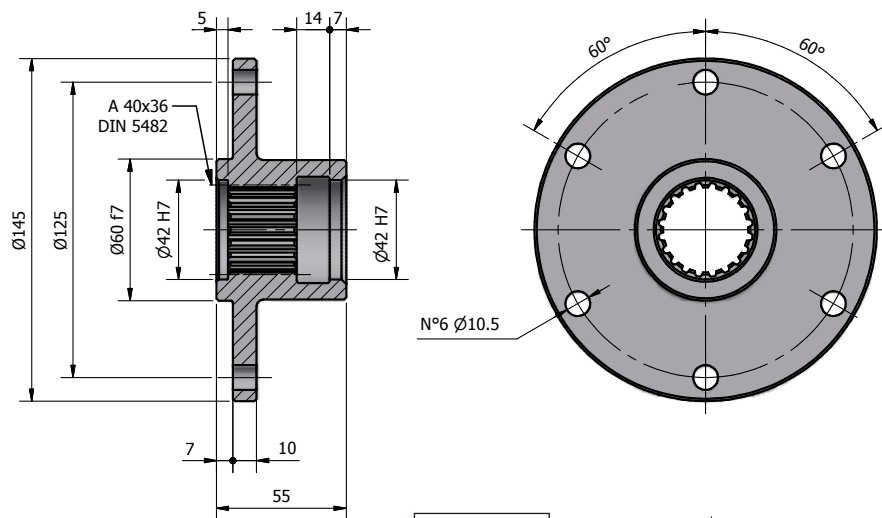
R-PAM

	PAM 63		PAM 71		PAM 80		PAM 90		PAM 100		PAM 112		PAM 132		PAM 160	
	L	D	L	D	L	D	L	D	L	D	L	D	L	D	L	D
NRG 10/2 R	216,6	140	200,6	160	220,6	200	220,6	200	226,6	250	226,6	250	247,6	300	274,6	350
NRG 10/3 R	216,6	140	200,6	160	220,6	200	220,6	200	226,6	250	226,6	250				
NRG 10/4 R	216,6	140	200,6	160	220,6	200	220,6	200								

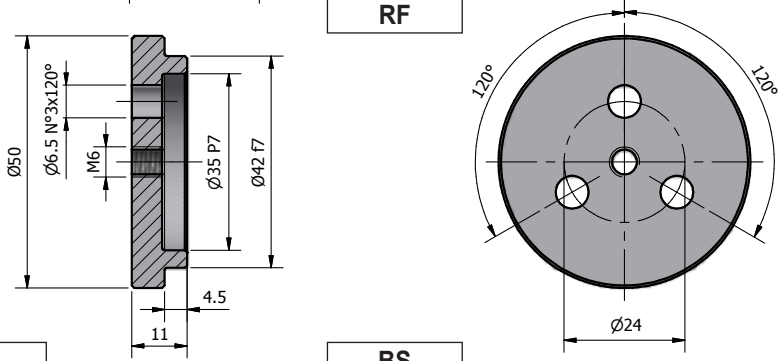
V-PAM

		PAM 63		PAM 71			PAM 80			PAM 90			PAM 100			PAM 112			
		A	L	D	A	L	D	A	L	D	A	L	D	A	L	D	A	L	D
		NRG 10/2 V	B5	-	-	-	-	-	-	109	80	200	109	80	200	112	80	250	112
	B14	-	-	-	-	-	-	109,5	80	120	109,5	80	140	118	80	160	118	80	160
NRG 10/3 V	B5	80	50	140	81	50	160	-	-	-									
	B14	80	50	90	81	50	105	81	50	120									
NRG 10/4 V	B5	80	50	140															
	B14	80	50	90															

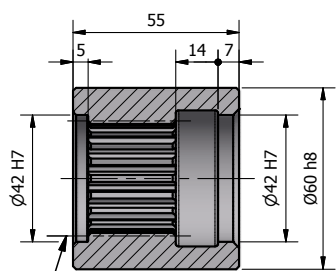
FS



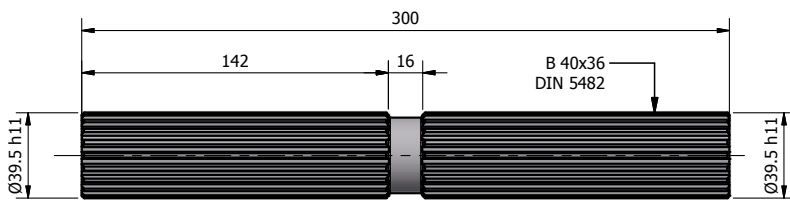
RF



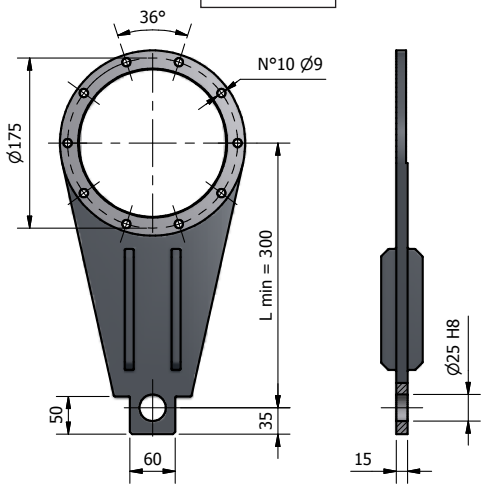
SS



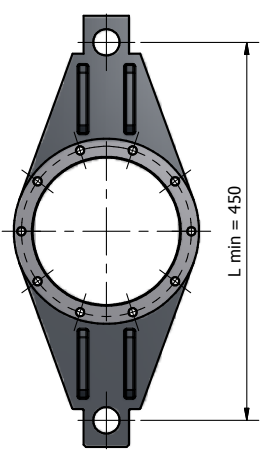
BS



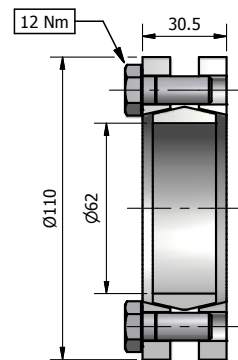
BR



BR-D



GA



Coppia max. 2.2 kNm
 Max. torque 2.2 kNm
 Max. Drehmoment 2.2 kNm
 Couple maxi 2.2 kNm
 Par máximo 2.2 kNm
 Torque max. 2.2 kNm