
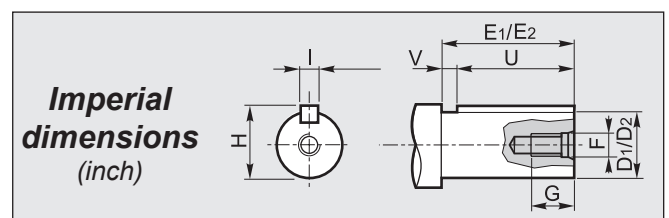
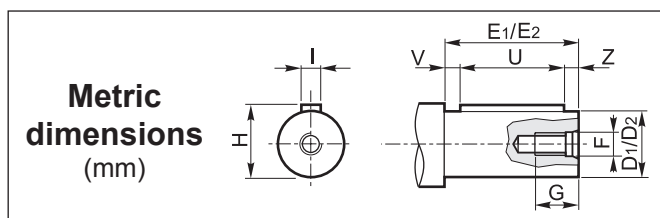


DATI TECNICI / TECHNICAL DATA / TECHNISCHE DATEN
 CARACTÉRISTIQUES TECHNIQUES / DATOS TÉCNICOS / CARACTERÍSTICAS TÉCNICAS

CV RCV	i	n ₁ = 2800 min ⁻¹			n ₁ = 1400 min ⁻¹			n ₁ = 900 min ⁻¹					
		n ₂ min ⁻¹	Mn ₂ Nm	P ₁ kW	n ₂ min ⁻¹	Mn ₂ Nm	P ₁ kW	n ₂ min ⁻¹	Mn ₂ Nm	P ₁ kW	IEC B5	IEC B14	NEMA
		381	1.63	1718	77	14.1	859	92	8.4	552	92	5.4	80-90-100/112-132
2.29	1223		79	10.3	611	94	6.1	393	95	4.0	80-90-100/112-132	132	140-180-210
3.00	933		92	9.2	467	110	5.5	300	110	3.5	80-90-100/112-132	132	140-180-210
3.38	828		92	8.1	414	110	4.9	266	111	3.2	80-90-100/112-132	132	140-180-210
4.11	681		96	7.0	341	115	4.2	219	115	2.7	80-90-100/112-132	132	140-180-210
4.75	589		106	6.7	295	126	4.0	189	127	2.6	80-90-100/112-132	132	140-180-210
5.57	503		108	5.8	251	130	3.5	162	130	2.2	80-90-100/112-132	132	140-180-210
7.36	380		110	4.5	190	132	2.7	122	133	1.7	80-90-100/112-132	132	140-180-210
10.40	269		116	3.3	135	138	2.0	87	139	1.3	80-90-100/112	132	140-180-210

DIMENSIONI / DIMENSIONS / ABMESSUNGEN / DIMENSIONS / DIMENSIONES / DIMENSÕES



① **Albero entrata / Input shaft / Antriebswelle**
Arbre d'entrée / Eje de entrada / Eixo de entrada

D ₁ h6	E ₁	F	G	H	I	U	V	Z
28	60	M10	20	31	8	50	5	5

① **Albero entrata / Input shaft / Antriebswelle**
Arbre d'entrée / Eje de entrada / Eixo de entrada

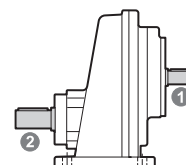
D ₁	E ₁	F	G	H	I	U	V
1.125	2.362	5/16-18	0.709	1.236	0.250	1.750	0.612

② **Albero uscita / Output shaft / Abtriebswelle**
Arbre de sortie / Eje de salida / Eixo de saída

D ₂ h6	E ₂	F	G	H	I	U	V	Z
28	60	M8	18	31	8	50	5	5
30	60	M10	22	33	8	50	5	5
32	80	M10	22	35	10	70	5	5
38	80	M12	28	41	10	70	5	5
40	80	M12	28	43	12	70	5	5

② **Albero uscita / Output shaft / Abtriebswelle**
Arbre de sortie / Eje de salida / Eixo de saída

D ₂	E ₂	F	G	H	I	U	V
1.625	3.150	1/2-13	1.299	1.792	0.375	2.500	0.650



A richiesta / On request / Auf Anfrage / Sur demande / Bajo demanda / Sob consulta