
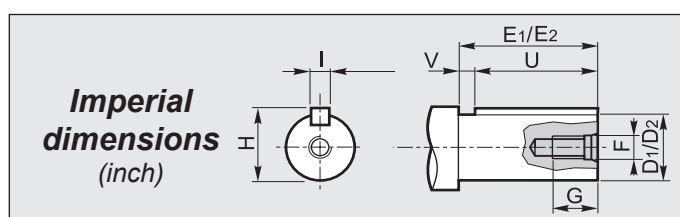
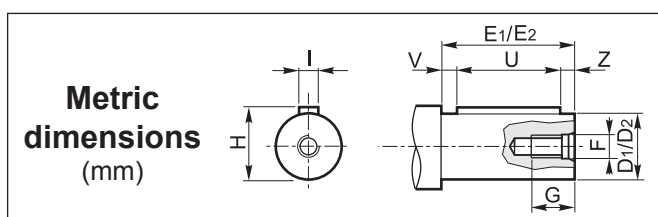


DATI TECNICI / TECHNICAL DATA / TECHNISCHE DATEN  
 CARACTÉRISTIQUES TECHNIQUES / DATOS TÉCNICOS / CARACTERÍSTICAS TÉCNICAS

CV RCV	i	n <sub>1</sub> = 2800 min <sup>-1</sup>			n <sub>1</sub> = 1400 min <sup>-1</sup>			n <sub>1</sub> = 900 min <sup>-1</sup>					
		n <sub>2</sub> min <sup>-1</sup>	Mn <sub>2</sub> Nm	P <sub>1</sub> kW	n <sub>2</sub> min <sup>-1</sup>	Mn <sub>2</sub> Nm	P <sub>1</sub> kW	n <sub>2</sub> min <sup>-1</sup>	Mn <sub>2</sub> Nm	P <sub>1</sub> kW	IEC B5	IEC B14	NEMA
252	3.70	757	80	6.6	378	96	4.0	243	96	2.5	63-71-80-90-100-112	90-100-112	56-140
	4.33	647	94	6.6	323	112	3.9	208	112	2.5	63-71-80-90-100-112	90-100-112	56-140
	5.02	558	111	6.8	279	132	4.0	179	133	2.6	63-71-80-90-100-112	90-100-112	56-140
	5.92	473	119	6.1	236	143	3.7	152	143	2.4	63-71-80-90-100-112	90-100-112	56-140
	6.47	433	122	5.8	216	146	3.4	139	146	2.2	63-71-80-90-100-112	90-100-112	56-140
	7.88	355	123	4.8	178	147	2.8	114	147	1.8	63-71-80-90-100-112	90-100-112	56-140
	8.93	314	128	4.4	157	153	2.6	101	153	1.7	63-71-80-90-100-112	90-100-112	56-140
	9.41	298	127	4.1	149	152	2.5	96	152	1.6	63-71-80-90-100-112	90-100-112	56-140
	10.53	266	130	3.8	133	156	2.3	85	156	1.5	63-71-80-90-100-112	90-100-112	56-140
	11.51	243	127	3.4	122	152	2.0	78	152	1.3	63-71-80-90-100-112	90-100-112	56-140
	14.01	200	127	2.8	100	153	1.7	64	153	1.1	63-71-80-90-100-112	90-100-112	56-140
	16.42	171	160	3	85	192	1.8	55	192	1.1	63-71-80-90	90	56-140
	19.35	145	169	2.7	72	202	1.6	46.5	203	1.0	63-71-80-90	90	56-140
	21.16	132	164	2.4	66	196	1.4	42.5	196	0.91	63-71-80-90	90	56-140
	25.75	109	158	1.9	54	189	1.1	35.0	190	0.72	63-71-80-90	90	56-140
	31.27	90	170	1.7	44.8	203	0.99	28.8	204	0.64	63-71-80-90	90	56-140
	36.86	76	171	1.4	38.0	206	0.85	24.4	204	0.54	63-71-80-90	90	56-140
	40.29	69	166	1.3	34.7	199	0.75	22.3	199	0.48	63-71-80-90	90	56-140
	49.04	57	160	1.0	28.5	191	0.59	18.4	191	0.38	63-71-80-90	90	56-140
	53.95	52	146	0.83	25.9	175	0.50	16.7	175	0.32	63-71-80-90	90	56-140
61.33	45.7	150	0.75	22.8	179	0.45	14.7	179	0.29	63-71-80-90	90	56-140	
67.47	41.5	146	0.66	20.7	175	0.40	13.3	175	0.25	63-71-80-90	90	56-140	
253	60.10	46.6	160	0.84	23.3	191	0.50	15.0	191	0.32	56-63-71	56-63-71	56
	69.60	40.2	172	0.78	20.1	205	0.46	12.9	205	0.30	56-63-71	56-63-71	56
	82.00	34.1	174	0.67	17.1	207	0.40	11.0	207	0.26	56-63-71	56-63-71	56
	89.70	31.2	167	0.59	15.6	201	0.35	10.0	201	0.23	56-63-71	56-63-71	56
	109.10	25.7	161	0.47	12.8	193	0.28	8.3	192	0.18	56-63-71	56-63-71	56
	122.50	22.9	172	0.44	11.4	206	0.27	7.3	206	0.17	56-63-71	56-63-71	56
	144.40	19.4	173	0.38	9.7	208	0.23	6.2	207	0.15	56-63-71	56-63-71	56
	157.90	17.7	168	0.34	8.9	202	0.20	5.7	202	0.13	56-63-71	56-63-71	56
	192.10	14.6	164	0.27	7.3	197	0.16	4.7	197	0.10	56-63-71	56-63-71	56

DIMENSIONI / DIMENSIONS / ABMESSUNGEN / DIMENSIONS / DIMENSIONES / DIMENSÕES



1 **Albero entrata / Input shaft / Antriebswelle**  
 Arbre d'entrée / Eje de entrada / Eixo de entrada

CV	D <sub>1</sub> h6	E <sub>1</sub>	F	G	H	I	U	V	Z
252	19	40	M6	15	21.5	6	30	5	5
253	16	40	M6	15	18	5	25	10	5

1 **Albero entrata / Input shaft / Antriebswelle**  
 Arbre d'entrée / Eje de entrada / Eixo de entrada

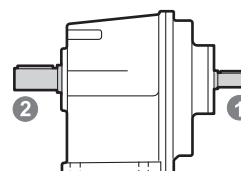
CV	D <sub>1</sub>	E <sub>1</sub>	F	G	H	I	U	V
252	0.750	1.575	5/16-18	0.709	0.832	0.187	1.000	0.575
253	0.625	1.575	1/4-20	0.630	0.704	0.187	1.000	0.575

2 **Albero uscita / Output shaft / Abtriebswelle**  
 Arbre de sortie / Eje de salida / Eixo de saída

CV RCV	D <sub>2</sub> h6	E <sub>2</sub>	F	G	H	I	U	V	Z
252 253	19	40	M6	16	21.5	6	30	5	5
	24	50	M8	18	27	8	40	5	5
	25	50	M8	18	28	8	40	5	5
	28	60	M8	18	31	8	50	5	5
	30	60	M10	22	33	8	50	5	5

2 **Albero uscita / Output shaft / Abtriebswelle**  
 Arbre de sortie / Eje de salida / Eixo de saída

CV RCV	D <sub>2</sub>	E <sub>2</sub>	F	G	H	I	U	V
252 253	1.000	1.969	5/16-18	0.709	1.109	0.250	1.500	0.469



A richiesta / On request / Auf Anfrage / Sur demande / Bajo demanda / Sob consulta