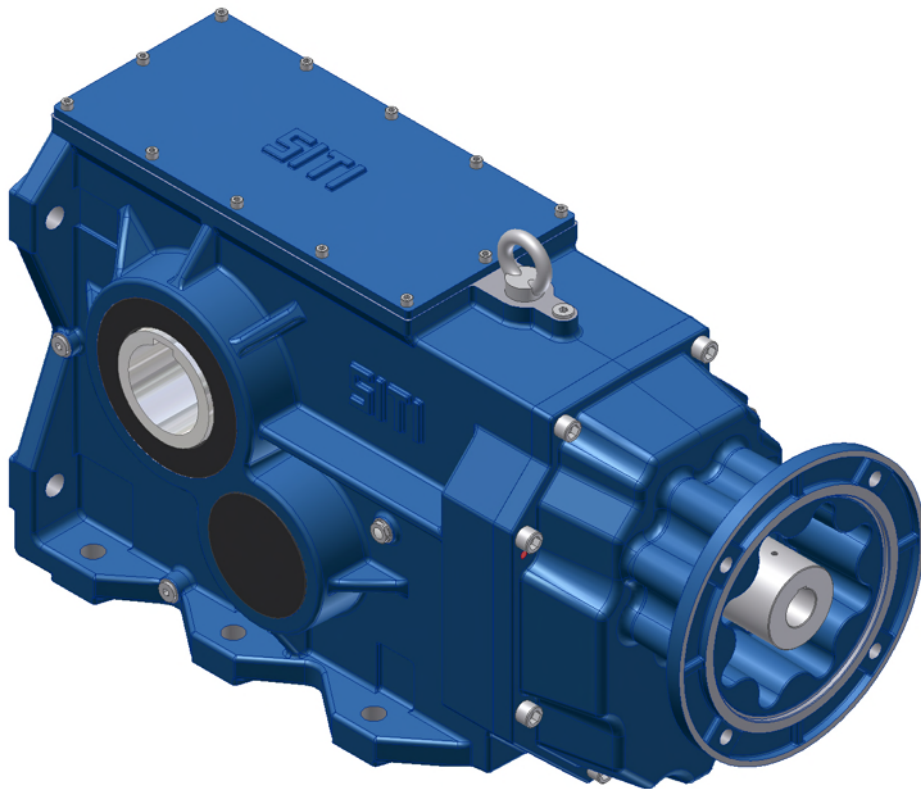
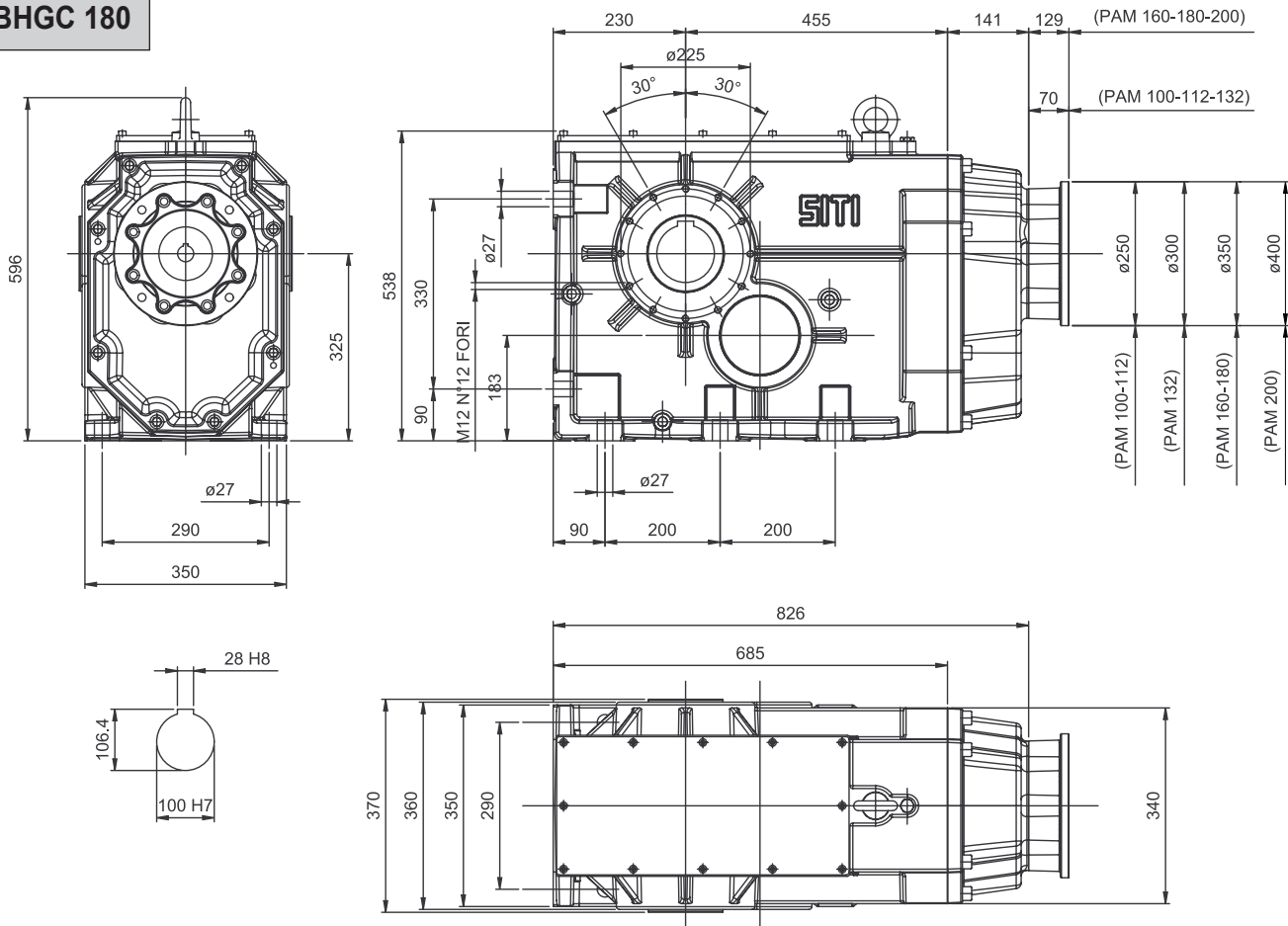


# BH 180



$$M_2^{\max} = 11000 \text{ Nm}$$

## MBHGC 180



i	MBHGC					
	100	112	132	160	180	200
7,94						
9,38						
10,67						
13,04						
15,41						
17,52						
20,93						
24,08						
26,56						
31,03						
34,65						
41,44						
47,22						
54,45						
63,75						
93,50						
110,50						
145,66						
162,07						
182,12						

I motori grandezza 225 e 250 possono essere montati solo in tipologia B3, con giunto senza campana.

Les moteurs taille 225 et 250 peuvent être montés seulement en type B3, avec joint sans cloche.

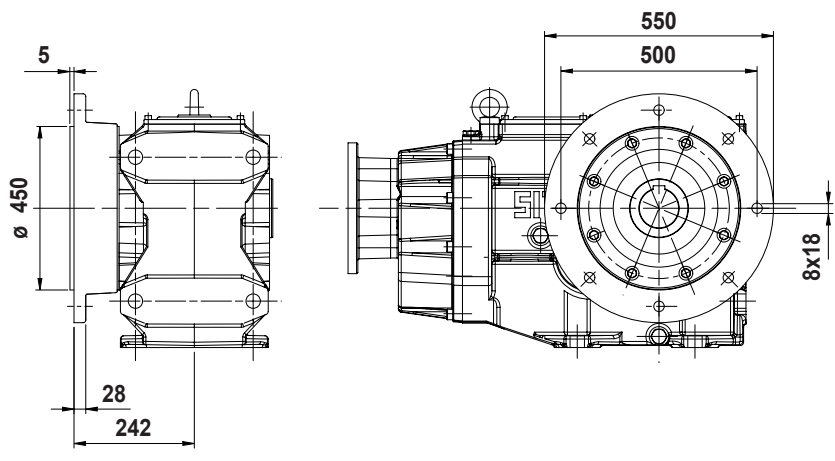
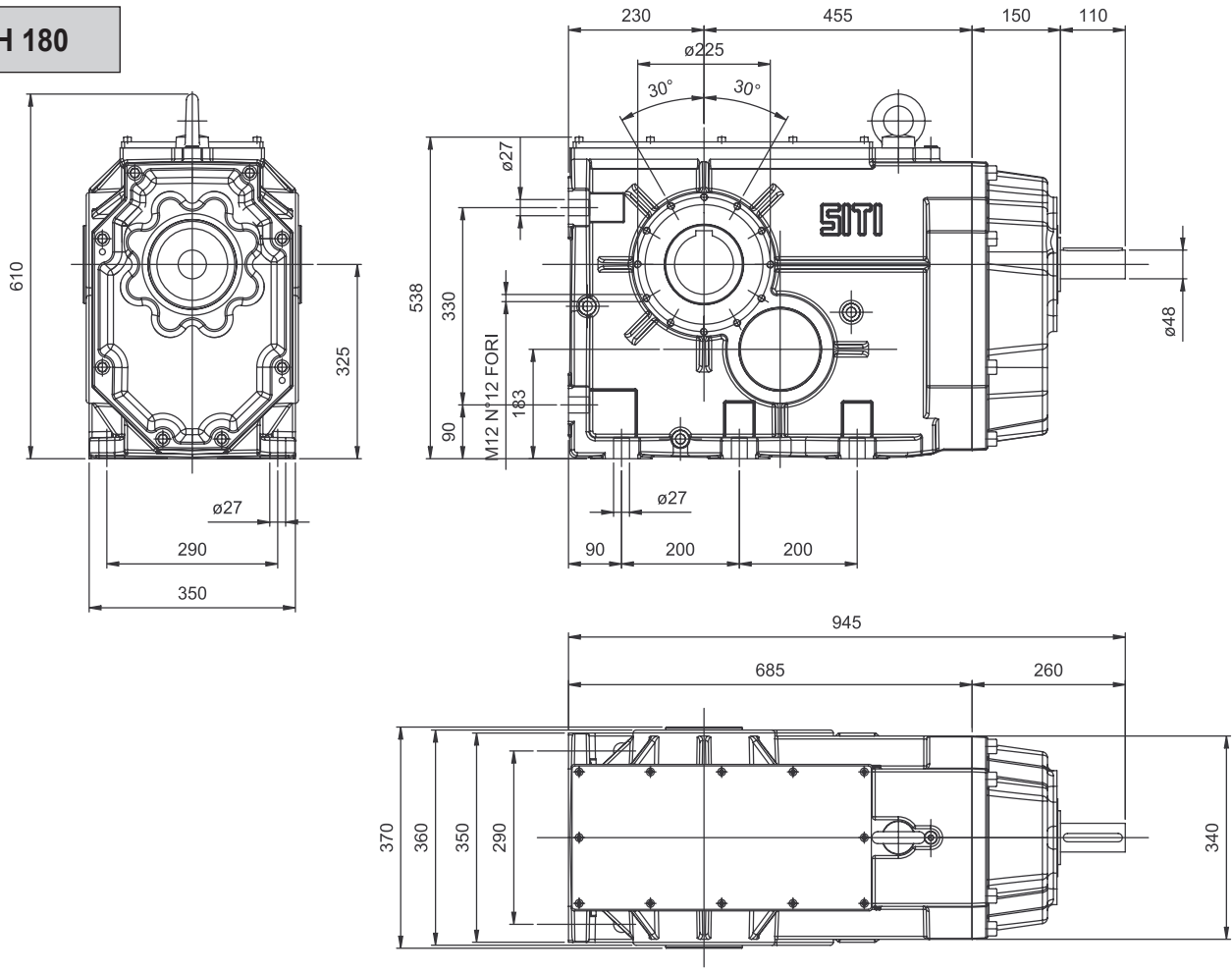
Motor size 225 and 250 can be mounted only in B3 type, with coupling but without bell-housing.

Los motores de tamaño 225 y 250 pueden montarse solo en la tipología B3, con junta sin campana.

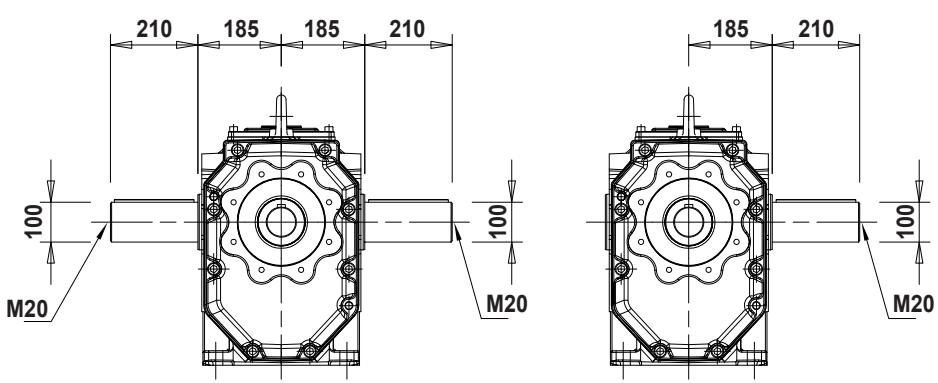
Die Motoren in Baugröße 225 und 250 können nur in Bauform B3 eingebaut werden; mit Kupplung aber ohne Glocke.

Os motores tamanho 225 e 250 podem ser montados apenas na tipología B3, com acoplamento sem campana.

**BH 180**



**OPTIONAL**  
 Flange in uscita  
 Output flanges  
 Abtriebsflansche  
 Brides de sortie  
 Bidas en salida  
 Flange de saída



**OPTIONAL**  
 Albero lento semplice / doppio  
 Single / double output shaft  
 Einseitige / doppelseitige Abtriebswelle  
 Arbre petite vitesse simple/double  
 Eje lento simple/doble  
 Eixo de saída simples/duplo